

Dust extractors & Air cleaners & Accessoires

# Construction



Healthy Business

**Dustcontrol**®



# Dustcontrol – Technology for Healthy Business

Removing dust from the workplace is not just a working environment and health issue, it is also a business issue. The cleaner the working environment, the better the end result. We call it **Healthy Business**.

## What we offer

Dustcontrol manufactures mobile dust extractors for industrial and construction use, fixed extraction systems, peripheral equipment and accessories. We help companies all over the world to achieve a cleaner working environment. Our development department and production facilities are located in Sweden.

Using one of our solutions, you can extract dust, fumes, chips, oil spillages and other harmful substances, right at their source. The result is efficient production. A healthy working environment results in less absence due to illness, more efficient production, less downtime and better production quality.

You will find us in many different types of industries where a clean working environment is necessary. Dustcontrol supplies a complete range of products and accessories for small and large companies alike. For example, we supply advanced cleanroom solutions for the pharmaceutical and electronics industries, mobile dust extractors of various sizes for construction and rental companies and central extraction systems for the automotive and newspaper printing industries.

All of our systems are unique and tailored to each individual company's specific requirements.



## Customer Focus

Dustcontrol was founded in 1972, with the idea of manufacturing extraction systems to capture dust and other pollutants at the source. We work closely with our customers, which means that we are always up to date regarding the requirements, regulations and working conditions in different types of workplace. We supply products that meet these ever-changing needs.

But it is not only products that we provide. We also provide the answers to questions such as: How can you capture and extract different kinds of particles and pollutants in the best possible way for your business? How do you deal with waste that can be recycled or reused?



The filter systems in all Dustcontrol mobile dust extractors are built to comply with the the stringent IEC machine classification H.

All our mobile machines are equipped with a fine filter and a HEPA filter (H13) that clean the exhaust air to 99.95 %. These high-efficiency filters also have a long service life, which not only results in cleaner air, but also low filter costs.

With Dustcontrol as your business partner, you will get the answers to these and any other questions that you may have. Whatever the conditions, we develop a source extraction solution that is right for you and your business.



## Service & Expertise

Our sales organisation comprises experienced technicians with specialist skills in their areas of expertise. If you need a mobile solution, we will come to your site and show you how it works. In the case of stationary installations, we can design and dimension the entire system to fully match your needs. We can take care of installation, commissioning and documentation, as well as planning a maintenance and service schedule.

We offer a complete service package, including accessories and spare parts. We manufacture and customise portable dust extractors and source extraction systems with very high levels of filtration, in which we use our proprietary filters that have set the industry standard.

As well as being responsible for delivery and installation, our project managers also train the personnel who will be working with our products and systems. In most countries, we have our own team of qualified installers with in-depth knowledge of our products.

With the help of Dustcontrol, you will achieve both a cleaner working environment and a healthy business.

## Dustcontrol AB

170 employees.

Founded in 1972.

Head office and factory  
in Norsborg, Sweden.

The company is family-owned.

Subsidiaries in the United Kingdom,  
Germany, Austria, USA and Finland.

Distributors in Europe, Asia, Australia  
and North & South America.



# Our Symbols

1-phase

The dust extractor has a 1-phase power system. Single motor and Twin motor

3-phase

The dust extractor has a 3-phase power system.

eco

The dust extractor includes an eco-green motor.



The filter systems in all mobile Dustcontrol dust extractors are built to comply with the EN 60335-2-69, Annex AA, H-class.



This device is H-classified and third party certified by a notified body according to EN 60335-2-69 Annex AA.



Product is safety tested and certified by Underwriters Laboratories.



The product is also available in ESD version.



**Warning label – Asbestos.** This device is H-classified and third party certified by a notified body according to EN 60335-2-69, Annex AA and TRGS 519.

**Test Certificate – DGUV Test**



We are certified according to ISO14001, ISO 9001 and ISO 45001.



Sustainability at Dustcontrol is marked with this logotype.

Dustcontrol AB makes every effort to maintain the accuracy and quality of the information provided in this catalogue. However, Dustcontrol AB cannot guarantee and assumes no legal liability or responsibility for the accuracy or completeness of the information provided. The information contained in this catalogue is for general guidance only.

The copyright of all content on this catalogue is owned by Dustcontrol AB. No part of the Dustcontrol AB catalogue may be changed, reproduced, stored in or transmitted on any website or medium without the prior written permission of Dustcontrol AB. Requests to republish any material must be sent to [support@dustcontrol.se](mailto:support@dustcontrol.se) In case of any questions or remarks, feel free to contact us.

# Index

|  |     |
|--|-----|
| Machines for every Job                         | 6-7 |
| Choose the right machine                       | 8-9 |
| What do the letters mean against our products? | 12  |

1-phase

## Dust Extractors

|                      |    |
|----------------------|----|
| DC 1800 & DC 1800 XL | 13 |
| DC 2900 a/c          | 14 |
| DC 2900 L            | 15 |
| DC Tromb 400         | 18 |
| DC Tromb Twin        | 19 |
| DC Tromb 600 L       | 20 |

3-phase

## Dust Extractors

|                             |    |
|-----------------------------|----|
| DC Tromb Turbo Direct Start | 24 |
| DC Storm 600 a/c/L          | 25 |
| DC 5900 15 hp P a/c/L       | 26 |
| DC Storm LPG a/c/L          | 27 |

|                                    |       |
|------------------------------------|-------|
| <b>Compare our Dust Extractors</b> | 28-29 |
| Semi-Mobile Systems                | 30-31 |

## Dustcontrol Air Cleaners

|                      |    |
|----------------------|----|
| DC AirCube 500       | 34 |
| DC AirCube 1200/2000 | 35 |

## Decontamination Systems

|                        |       |
|------------------------|-------|
| DC Decontamination Box | 38-39 |
|------------------------|-------|

## Dustcontrol Pre-Separators

|                             |    |
|-----------------------------|----|
| DCF Tromb & DCF Storm       | 42 |
| DCF 60 & DCF 2800           | 43 |
| DCF Cyclone Separator Cover | 43 |
| DCF Wheelbarrow             | 44 |
| DCF Tipping Container       | 44 |

## Classification of Dust

|                           |       |
|---------------------------|-------|
| Extractors & HEPA Filters | 46-47 |
|---------------------------|-------|

## Accessories and Hoses

|                         |       |
|-------------------------|-------|
| Cleaning Accessories    | 49-51 |
| Suction Hoses           | 52-55 |
| Suction Cases           | 56-61 |
| Plastic Bags            | 62-63 |
| Choose the Right Filter | 64-65 |
| Filters                 | 66-69 |

|                                |    |
|--------------------------------|----|
| Premium packaging              | 70 |
| Dustcontrol service            | 70 |
| Environmental & Quality policy | 72 |
| QR Codes                       | 73 |
| Contact Info                   | 74 |
| Worldwide Distributors         | 75 |

# Machines for every job

---

No matter who you are and what type of work you are involved in, we have exactly the right machines for you and the job that you do. Small and agile or big and powerful? Only you know which Dustcontrol machine is the right one for you.

---

Floor Finisher

Drilling Specialist

Decontamination  
and Abatement  
Specialist



Construction Worker

Carpenter

Painter

# Choose the Right Machine

1-phase

## Dust extractor

**DC 1800.** The DC 1800 H and DC 1800 XL are high-quality, compact versions of our best-selling DC 2900. It combines ease of use with a large suction capacity and high level of filtration.

**DC 2900.** A small, lightweight dust extractor that can handle tough conditions. Equipped with a cyclone inlet, reverse pulse filter cleaning and separate HEPA filter.

**DC Tromb 400** is a compact, powerful, robust and efficient 1-phase dust extractor. There are three versions within the Tromb family: DC Tromb H 400 dust extractor, DCF Tromb pre-separator and a DC Tromb H 400 Twin dust extractor and pre-separator in one.

**DC Tromb 600** is our latest powerful single-phase dust extractor. The maximum air flow is as high as 600 m<sup>3</sup>/h = 353 cfm, which is more than enough capacity for equipment such as large floor grinders and large electric cut-off saws with max 800 mm/32".

## Task or tool

|  |  |
|--|--|
| Drilling                               | Small crosscut and mitre saw, jackhammer |
| Cleaning Ø38 mm/1.5"                   | Personal decontamination                 |
| Reciprocating saw                      | Depressed centre disc Ø125 mm/5"         |
| Jig saw                                | Wall sander Ø125 mm/5"                   |
| Abrasive disc Ø125 mm/5"               | Oscillating machine                      |
| Fibre disc Ø125 mm/5"                  |  |
| Abrasive disc Ø230 mm/9"               | Depressed centr. disc Ø230 mm/9"         |
| Grooving saw 2xØ150 mm/6"              | Concrete milling machine                 |
| Jackhammer, Circular saw               | Chipping hammer                          |
| Concrete floor grinding max 500 mm/19" | Cleaning Ø50 mm/2"                       |
| Max 800 mm/32"                         | Filler sanding                           |

3-phase

## Dust extractor

### DC Storm 600

DC Storm is compact, simple to transport and powerful. All these models feature a direct-driven, three-phase turbo pump suitable for continuous operation, heavy material transport, source extraction and cleaning. Equipped with frequency converters are suitable for use when only 16A access is available.

**DC Tromb Turbo** is equipped with a powerful three-phase turbo motor which is suitable for heavy cleaning (38 mm/1.5" accessories).

## Task or tool

|                                      |                       |
|--------------------------------------|-----------------------|
| Concrete floor grinding 850 mm/33,5" | Semi-mobile system    |
| Abrasive disc Ø300 mm/12"            | Material transport    |
| Suction lance Ø76 mm/3"              | Brick saw Ø400 mm/16" |
| Concrete milling machine             | Cleaning Ø50 mm/2"    |
| Depressed centre disc Ø300 mm/12"    |                       |

## Air cleaner

### DC AirCube 500, 1200 and 2000

Air cleaners are used as a complement to source extraction in very dusty environments. Recommended air change is 10 times per hour minimum.

## Task or tool

Jackhammering, wall sanding, concrete grinding, demolition work, kitchen and bathroom renovation, and other construction work



## Pre-Separators

When large quantities of dust are produced, we recommend a pre-separator:



DCF 2800



DCF 60



DC 1800a H



DC 1800 XL



DC 2900L



DCF Tromb



DC Tromb H 400a



DC Tromb H Twin 400cL



DC Tromb 600L



DCF Storm



DCF Wheelbarrow



DC Tromb Turbo



DC Storm 600L



DC Storm LPG

## Dust Classification H



The filter systems in all Dustcontrol dust extractors are built to comply with the the stringent IEC machine classification H.



DC AirCube 500



DC AirCube 1200



DC AirCube 2000





# 1-Phase Dust Extractors



## What do the letters mean against our products?

These letters describe which collection container comes with our machines. For our twin-models we use a combination, CL, AA and CA.

We also use abbreviations for the various performance, usage and material of the machines. We hope this will make your selection easier and quicker.

### Collection Containers:

- c Bag
- a Container
- L Longopac bag

### Performance, Usage and Material:

- H This device is H-classified and third party certified by a notified body according to EN 60335-2-69 Annex AA.
- P Turbo pump in Parallel drive
- S Turbo pump in Serial drive
- TR Compressed air driven
- EX ATEX
- SS Stainless Steel container/cyclone
- I Industry-line
- LPG Liquid Propane Gas powered
- Turbo Turbo-3-phase motor
- DCF Pre-Separator

## Single-Phase Dust Extractors

# DC 1800<sup>H</sup>

This machine is particularly suitable for general cleaning and source extraction from handheld power tools (with suction casings up to Ø125 mm/5") and small table saws.

The DC 1800 H is equipped with a container. A plastic bag can be used inside the container to facilitate the emptying of dust and other material.

### Part No DC 1800 H

101830 115V /60Hz, US/CAN

1-phase

eco



### Supplied with (Part No)

Suction hose (Ø38 mm/1.5"), 5 m (2111)  
 Suction hose, antistatic (Ø38 mm/1.5"), 5 m/16 ft (2012)  
 UK/US/CAN models  
 Connecting sleeve (2115)  
 Coupling socket (2108)  
 Floor nozzle (B370 mm/W17") (7235)  
 Suction pipe (Ø38 mm/1.5") (7257)  
 Plastic bag (42291)  
 Bag support frame (42369)  
 Fine filter, cellulose (42029)  
 HEPA H13 filter (42027)

### Technical data

|   |                      |
|---|----------------------|
| HxWxD [mm/in]                             | 780x405x390/31x16x15 |
| Weight [kg/lb]                            | 14/31                |
| Hose length Ø38 mm /1.5" [m/ft]           | 5/16                 |
| Collection container [l/gal]              | 20/5.2               |
| Flow max, fan, US/CAN 115V [m³/h /cfm]    | 215/126.5            |
| Negative pressure, max, US/CAN [kPa/inwg] | 21/84.3              |
| Power 115V [W]                            | 1340                 |
| Sound level [dB(A)]                       | 68                   |

# DC 1800<sup>XL</sup>

The DC 1800 XL is especially suited for parquet grinding and other working operations that produce light dust. Suitable for general cleaning and source extraction from handheld power tools (with up to 5" suction casings) and small table saws. It is slim, lightweight and ideal for those that need a highly portable machine that is powerful enough for source extraction. Equipped with a steel container.

### Part No DC 1800 XL

101885 115V /60Hz, USA  
 101887 115V /60Hz, CAN

1-phase

eco



### Supplied with (Part No)

Suction hose antistatic (Ø38 mm 1.5") 5 m (2012+2114)  
 Coupling socket 50/38 (2108)  
 Fine filter, cellulose (42029)  
 HEPA H13 filter (42027)

### Technical data

|   |                       |
|---|-----------------------|
| HxWxD [mm/in]                             | 1160x380x380/46x15x15 |
| Weight [kg/lb]                            | 19/42                 |
| Hose length Ø38 mm /1.5" [m/ft]           | 5/16                  |
| Collection container [l/gal]              | 60/15.9               |
| Flow max, fan, US/CAN 115V [m³/h /cfm]    | 215/126.5             |
| Negative pressure, max, US/CAN [kPa/inwg] | 21/84.3               |
| Power 115V [W]                            | 1340                  |
| Sound level [dB(A)]                       | 68                    |

## Single-Phase Dust Extractors

### With plastic bag

# DC 2900

The DC 2900c is our most popular dust extractor. It is suitable for vacuum cleaning and source extraction from handheld power tools (with suction casings up to Ø125 mm/5") and small table saws. The DC 2900c has a sturdy steel chassis with large wheels, but is still light and portable.

#### Part No DC 2900c

120015 115V /60Hz, US/CAN



#### Supplied with (Part No)

Suction hose (Ø38 mm/1.5"), 5 m/16 ft (2111)  
 Suction hose, antistatic (Ø38 mm/1.5"), 5 m/16 ft (2012) UK/US/CAN models  
 Connecting sleeve (2115)  
 Coupling socket (2108)  
 Floor nozzle B370/W17" (7235)  
 Suction pipe Ø38 mm/1.5" (7257)  
 Plastic bag (42702)  
 Fine filter, cellulose (42029)  
 HEPA H13 filter (42027)

#### Technical data

|   |                       |
|---|-----------------------|
| HxWxD [mm/in]                             | 1110x445x570/44x17x22 |
| Weight [kg/lb]                            | 16/35                 |
| Hose length Ø38 mm /1.5" [m/ft]           | 5/16                  |
| Collection container [l/gal]              | 20/5.3                |
| Flow max, fan, US/CAN 115V [m³/h /cfm]    | 215/126.5             |
| Negative pressure, max, US/CAN [kPa/inwg] | 24/96.4               |
| Power 115V [W]                            | 1340                  |
| Sound level [dB(A)]                       | 68                    |

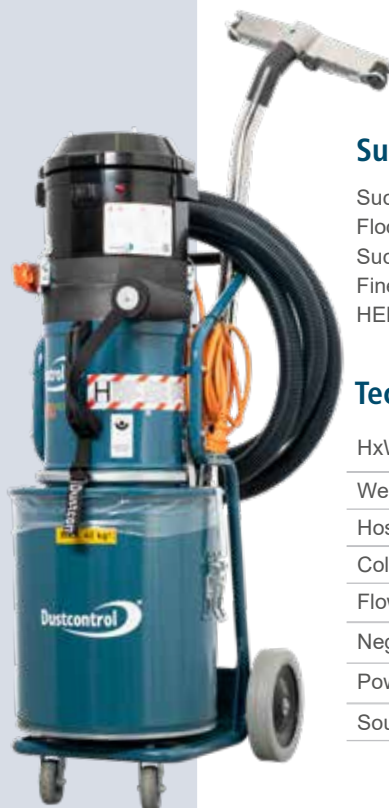
### With container

# DC 2900<sup>H</sup>

Collection in a container makes the DC 2900a H ideal to use for sharp material such as metal chips.

#### Part No DC 2900a H

121015 115V /60Hz, US/CAN



#### Supplied with (Part No)

Suction hose, antistatic (Ø38 mm/1.5"), 5 m/16 ft, (2012)  
 Floor nozzle B370 /W17" (7235)  
 Suction pipe Ø38 mm/1.5" (7257)  
 Fine filter, polyester (42028)  
 HEPA H13 filter (42027)

#### Technical data

|   |                       |
|---|-----------------------|
| HxWxD [mm/in]                             | 1145x445x630/45x17x25 |
| Weight [kg/lb]                            | 22/48                 |
| Hose length Ø38 mm /1.5" [m/ft]           | 5/16                  |
| Collection container [l/gal]              | 40/10.6               |
| Flow max, fan, US/CAN 115V [m³/h /cfm]    | 215/126.5             |
| Negative pressure, max, US/CAN [kPa inwg] | 24/96.4               |
| Power 115V [W]                            | 1340                  |
| Sound level [dB(A)]                       | 68                    |

## Single-Phase Dust Extractors

With **Longopac**

# DC 2900

The DC 2900 is our most popular dust extractor. It is suitable for vacuum cleaning and source extraction from handheld power tools (with suction casings up to Ø125 mm/5") and small table saws.

We are now launching DC 2900L with Longopac output, a flexible bag system, where dust is collected in a closed system. The DC 2900L can be ordered with a plastic bag/Longopac (DC 2900c/DC 2900L) or a container (DC 2900a).

### Supplied with (Part No)

Suction hose (Ø38 mm/1.5"), 5 m/16 ft (2111)  
Suction hose, antistatic (Ø38 mm/1.5"), 5 m/16 ft (2012) UK/US/CAN models  
Connecting sleeve (2114)  
Coupling socket (2108)  
Floor nozzle B370/W17" (7235)  
Suction pipe Ø38 mm/1.5" (7257)  
Longopac mini 12 (44763)  
Fine filter, cellulose (42029)  
HEPA H13 filter (42027)

### Accessories (Part No)

Longopac mini 12 (6 pcs á 12 m) (44763)  
Longopac mini 23 (4 pcs á 23 m) (432177)

### Part No DC 2900L

122015 115V, UL \*)



\*) Product is safety tested and certified by Underwriters Laboratories.

### Technical data

|  |                       |
|--|-----------------------|
| HxWxD [mm/in]                              | 1110x445x570/44x17x22 |
| Weight [kg/lb]                             | 19/42                 |
| Hose length Ø38 mm /1.5" [m/ft]            | 5/16                  |
| Collection container [m/ft]                | Longopac              |
| Flow max, fan, US/CAN 115V [m³/h /cfm]     | 215/126.5             |
| Negative pressure, max, US/CAN [kPa /inwg] | 24/96.4               |
| Power 115VV [W]                            | 1340                  |
| Sound level [dB(A)]                        | 68                    |









## Single-Phase Dust Extractors

# DC Tromb H 400

Dustcontrol has taken the DC Tromb H 400 to a new level. There are now three new versions within the Tromb family: DC Tromb H 400 dust extractor, DCF Tromb pre-separator and a DC Tromb Twin dust extractor and pre-separator in one.

As always, we are focusing to meet modern safety requirements along with an ergonomic and modular function. One of the major updates is that the new DC Tromb Twin model is separable. The dust extractor and pre-separator are easily detached and re-assembled from each other making transport simple.

Other important updates include a simpler filter change system and a motor package that is easier to remove. As well as that, improved motors and a sturdier chassis mean that the whole range has gone through a major expansion and upgrade.



### Part No DC Tromb H 400

|        |    |                |
|--------|----|----------------|
| 171507 | c  | 115V, CAN      |
| 171532 | L  | 115V, US       |
| 171537 | L  | 115V, CAN      |
| 172002 | a  | 115V US        |
| 172507 | cc | TWIN 115V, CAN |
| 172532 | cL | TWIN 115V, US  |
| 172537 | cL | TWIN 115V, CAN |
| 172552 | LL | TWIN 115V, US  |
| 172557 | LL | TWIN 115V, CAN |

### Supplied with (Part No)

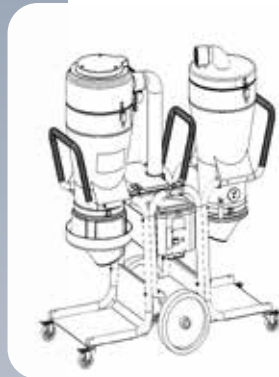
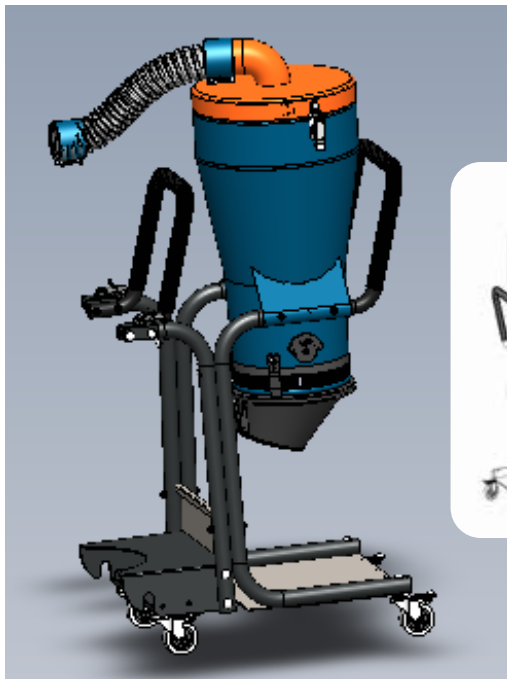
Connecting sleeve (2129)  
 Coupling socket (2008)  
 Suction hose antistatic (Ø50 mm /2") 5 m/16 ft (2013)  
 Suction hose (Ø50 mm /2") 5 m /16 ft (2401) for model 171500 and 171508  
 Floor nozzle B500 mm /W 19.7" (7238)  
 Suction pipe (Ø50 mm /2") (7265)  
 Fine filter, polyester (44017)  
 HEPA H13 filter (44016)

#### Discharge

a) 40 l /10.6 US gal container (40070) and 5 x plastic bags (42285)  
 c) 10 x plastic bags (43619)  
 L) Longopac 25 m /82 ft (432177)

### Technical data

|  |   |
|--|---|
| HxWxD [mm/in]                              | 1390x600x780/55x23x31                     |
| Weight [kg/lb]                             | a) 50/110.2<br>c) 46/101.4<br>L) 50/110.2 |
| Inlet Ø [mm/in]                            | 76/3                                      |
| Collection container [l/gal]               | a) 40/10.6<br>c) 20/5.3<br>L) Longopac    |
| Flow max, fan, US/CAN 115V [m³/h /cfm]     | 360/212                                   |
| Negative pressure, max, US/CAN [kPa /inwg] | 21 (+/- 10%) / 84.3                       |
| Power 115V [W]                             | 2100                                      |
| Sound level [dB(A)]                        | 70  |



## DC Tromb<sup>H</sup> Twin

### Supplied with (Part No)

Antistatic hose set (Ø50 mm /2") mm x 7,5 m/25 ft  
 (Part No 2013+2129+2008)  
 Floor nozzle (B500 mm /W 19.7") (7238)  
 Suction pipe (Ø50 mm /2") (7265)  
 a-model (AA, AL) 5 x plastic bags (42285)  
 c-model (CC) with 10 x plastic bags (43619)  
 L-model (CL) with Longopac 25 m (432177)  
 + 10 x plastic bags (43619)  
 Fine filter, polyester (44017)  
 HEPA H13 filter (44016)

### Technical data

|  |                          |
|--|--------------------------|
| HxWxD [mm/in]                              | 1360x600x1280/55x22x27   |
| Weight [kg/lb]                             | CC) 71/168<br>CL) 80/173 |
| Inlet Ø [mm/in]                            | 76/3                     |
| Collection container [l/gal]               | C) 20/5.3<br>L) Longopac |
| Flow max, fan, US/CAN 115V [m³/h /cfm]     | 365/214.8                |
| Negative pressure, max, US/CAN [kPa /inwg] | 21 (+/- 10%) /84.3       |
| Power 115V [W]                             | 3000                     |
| Sound level [dB(A)]                        | 70                       |

### Accessoires for DC Tromb Twin

With a DCF Tromb Kit you can connect the dust extractor DC Tromb Twin with the pre-separator DCF Tromb.

DCF Tromb Kit L (707010)  
 DCF Tromb Kit c (707011)  
 DCF Tromb Kit a (707012)

## Single-Phase Dust Extractors

# DC Tromb 600 L 1-phase



### Supplied with (Part No)

Connecting sleeve (2129)  
 Coupling socket (2008)  
 Suction hose antistatic (Ø50 mm /2") 5 m/16 ft (2013)  
 Floor nozzle B500 mm /W 19.7" (7238)  
 Suction pipe (Ø50 mm /2") (7265)  
 Fine filter, polyester (44017-2)  
 HEPA H13 filter (44016-1)

### Technical Data

|                                       |                       |
|---------------------------------------|-----------------------|
| HxWxD [mm/in]                         | 1600x600x800/63x24x31 |
| Weight [kg/lb]                        | 63/143                |
| Collection container [l/gal]          | L) Longopac           |
| Flow max, fan, US [m³/h /cfm]         | 600/353               |
| Negative pressure, max, US [kPa/inwg] | 21 (+/- 10%) / 84.3   |
| Power 230V/50Hz/60Hz [W]              | 4050                  |
| Sound level [dB(A)]                   | 80                    |

**Part No DC Tromb 600 L** 181532 230V /60Hz, US

The DC Tromb 600 is our most powerful single-phase dust extractor. It is designed to meet modern safety requirements and to work in conjunction with tools that have become ever more efficient and therefore produce more dust than they have previously. The maximum air flow is as high as 600 m³/h = 353 cfm, which is more than enough capacity for equipment such as large floor grinders and large electric cut-off saws.

Not only is the DC Tromb 600 compact, powerful and efficient, but it's versatile too. It is easy to transport around construction sites, move in stair-wells and lift into tight spaces. The wheels are puncture-proof and won't leave marks on the floor. The front wheels are lockable for working on uneven ground. The DC Tromb 600 is adapted for all types of fine dust such as concrete (silica), plaster, wood and filler dust.

The machine comes equipped as standard with a fine filter (rinsable polyester) and an HEPA H13 filter that complies with OSHA regulations. A filter monitor shows the user when it's time to clean the filter. Filter cleaning can be done automatically during operation, or once the work has been completed.



Protected shutter valve



Locking ring for pre-filter

Microfilter/ HEPA H13 filter





## Capture dust with source extraction.

All dust on construction sites is a health hazard in the long term. However, there are some types of dust that are hazardous in the short term too. It has become standard practice for modern construction companies to take the health of their employees seriously and to minimise the levels of dust in the workplace.

Source extraction means that the dust is captured before it spreads and before it can be breathed in. Dust levels can be significantly reduced by fitting all power tools with suction casings and connecting these to efficient dust extractors.

Cleaning should be carried out with a dust extractor with the classification H. The dust extractor should be equipped with a HEPA filter to prevent the spread of the finest dust particles. Sweeping simply stirs the hazardous dust up into the air, subjecting those in the area to further exposure. To put it simply, source extraction and cleaning using approved dust extractors are absolutely vital.



# 3-Phase Dust Extractors



# DC Tromb Turbo

## Three-Phase Dust Extractors

With **direct start**

# DC Tromb Turbo

The DC Tromb Turbo is a medium sized dust extractor that expands the Tromb family. It is equipped with a powerful three-phase turbo motor which is suitable for heavy cleaning (38 mm/1.5" accessories) and is delivered with 7 m hose. Suitable for source extraction from medium sized power tools such as grinders, jack hammers and saws. Thanks to the tall cyclone, large filters and powerful motor package, it can handle large amounts of debris.

### Part No DC Tromb Turbo a/c/L

|        |                       |
|--------|-----------------------|
| 173502 | a 4hp 460V /60Hz, US  |
| 173102 | c 4hp 460V /60Hz, US  |
| 173302 | L 4hp 460V /60Hz, US  |
| 173107 | c 4hp 600V /60Hz, CAN |



### Supplied with (Part No)

- Suction hose set, 7 m /23 ft, 5 m /16 ft (Ø50 mm /2") and 2 m /6.5 ft (Ø38 mm /1.5"), (2126)
- Floor nozzle B450 mm (7236)
- Suction pipe (Ø38 mm /1.5") (7257)
- Connecting sleeve (2114)
- Coupling socket (2107)
- Fine filter, polyester (44017)
- HEPA H13-filter (44016)
- a-model 5 x plastic bags (42285)

### Technical data

|  |  |
|--|--|
| HxWxD [mm/in]                              | 1390x600x840/55x23x33                                      |
| Weight [kg/lb]                             | a) Container 88/194<br>c) Bag 84/185<br>L) Longopac 86/190 |
| Collection container [l/gal]               | a) 40/10.6<br>c) 20/5.3<br>L) Longopac                     |
| Flow max, fan, US/CAN [m³/h /cfm]          | 315/186  |
| Negative pressure, max, US/CAN [kPa /inwg] | 28/112.4   |
| Power [hp]                                 | 4  |
| Sound level [dB(A)]                        | 72   |



## Three-Phase Dust Exctrators

### DC Storm 600c

#### Supplied with (Part No)

Coupling socket (2107)  
Coupling socket (2008)  
Suction hose antistatic (Ø50 mm /2")  
7.5 m/22 ft (2013)  
Floor nozzle B500 mm /W 19.7" (7238)  
Suction pipe (Ø50 mm /2") (7265)  
10 x plastic bags (46145)  
Fine filter, polyester (44212)  
HEPA H13 filter (42807)

### DC Storm 600a

#### Supplied with (Part No)

Coupling socket (2107)  
Coupling socket (2008)  
Suction hose antistatic (Ø50 mm /2")  
7.5 m/ 22 ft (2013)  
Floor nozzle B500 mm /W 19.7" (7238)  
Suction pipe (Ø50 mm /2") (7265)  
Container 75 l /20 US gal (7368)  
Fine filter, polyester (44212)  
HEPA H13 filter (42807)

### DC Storm 600L PTFE

#### Supplied with (Part No)

Coupling socket (2107)  
Coupling socket (2008)  
Suction hose antistatic (Ø50 mm /2")  
7.5 m/22 ft (2013)  
Floor nozzle B500 mm /W 19.7" (7238)  
Suction pipe (Ø50 mm /2") (7265)  
Longopac 25 m /82 ft (44077)  
Fine filter, PTFE (44081)  
HEPA H13 filter (42807)



# DC Storm 600

#### Technical data

|  |                            |
|--|----------------------------|
| HxWxD [mm/in]                              | 1790x780x1160/70.5x31x45.5 |
| Weight [kg/lb]                             | 201/443                    |
| Collection container [l/gal]               | 60/13.6                    |
| Flow max, fan, US/CAN [m³/h /cfm]          | 600/353                    |
| Negative pressure, max, US/CAN [kPa /inwg] | 24/96                      |
| Power [hp]                                 | 10                         |
| Sound level [dB(A)]                        | 75                         |

#### Technical data

|  |                            |
|--|----------------------------|
| HxWxD [mm/in]                              | 1790x780x1160/70.5x31x45.5 |
| Weight [kg/lb]                             | 203/447.5                  |
| Collection container [l/gal]               | 75/17                      |
| Flow max, fan, US/CAN [m³/h /cfm]          | 600/353                    |
| Negative pressure, max, US/CAN [kPa /inwg] | 24/96                      |
| Power [hp]                                 | 10                         |
| Sound level [dB(A)]                        | 75                         |

#### Technical data

|  |                            |
|--|----------------------------|
| HxWxD [mm/in]                              | 1790x780x1160/70.5x31x45.5 |
| Weight [kg/lb]                             | 201/443                    |
| Collection container [mm/ft]               | Longopac 20/65 flexible    |
| Flow max, fan, US/CAN [m³/h /cfm]          | 600/353                    |
| Negative pressure, max, US/CAN [kPa /inwg] | 24/96                      |
| Power [hp]                                 | 10                         |
| Sound level [dB(A)]                        | 75                         |

DC Storm 600c



DC Storm 600a



DC Storm 600L PTFE



#### Part No DC Storm 600c

119407 460V /60Hz /10hp, US  
119436 220/380V /60Hz /10hp, US  
119408 600V /60Hz /10hp, CAN

#### Part No DC Storm 600a

119409 460V /60Hz /10hp, US  
119437 220/380V /60Hz /10hp, US  
119410 600V /60Hz /10hp, CAN

#### Part No DC Storm 600L PTFE

119434 460V /60Hz /10hp, US  
119435 220/380V /60Hz /10hp, US

# STORM

The DC Storm is a powerful and reliable mobile dust extractor. They are built on a robust and sturdy steel chassis for maximum durability, for example on construction sites. With a direct-driven, three-phase turbopump, the DC Storm is suitable for continuous operation, conveying heavy material away, source extraction and cleaning.

The DC Storm provides sufficient air flow for several users at the same time and it can also be used as a semi-mobile central unit in a tubing system. It is suitable for source extraction for grinding discs up to approx. 800 mm/ 31" in diameter.



## Three-Phase Dust Extractors

# DC 5900 15 hp P

DC 5900 15 hp P, is a powerful machine with sufficient capacity to support up to three users simultaneously with tasks such as cleaning with Ø38mm cleaning equipment and two more operators with hand-held grinders, saws, drills or with two users with Ø50mm cleaning equipment.

The machine is especially suitable for placed in the basement and with a standing Ø76mm pipe or hose system installed as a riser in stairwells. At each floor, you can then effectively connect the machine's hose through a manifold with flap valve.



### Part no DC 5900 15 hp P a/c/L

|        |                           |
|--------|---------------------------|
| 119301 | a 60 l bag                |
| 119305 | c 75 l container          |
| 119333 | L Longopac                |
| 119336 | L 460V /15hp 60Hz, US/CAN |
| 119314 | c 460V /15hp 60Hz, US/CAN |
| 119315 | a 460V /15hp 60Hz, US/CAN |
| 119316 | c 600V /15hp 60Hz, US/CAN |
| 119317 | a 600V /15hp 60Hz, US/CAN |



### Supplied with (Part No)

#### Discharge

- a) 75 l /20 US gal container (40070)
- c) 10 x plastic bags (46145)
- L) Longopac 25 m /82 ft (44077)

- Fine filter, polyester (4292)
- HEPA H13 filter (42807)

### Technical data

|  |   |
|--|---|
| HxWxD [mm/in]                              | 1942x780x1160 /76x30x4                                |
| Weight [kg/lb]                             | 210/463   |
| Collection container [l/gal]               | a) Container 75/19.8<br>c) Bag 60/15.8<br>L) Longopac |
| Flow max, fan, US/CAN [m³/h /cfm]          | 800/470.9   |
| Negative pressure, max, US/CAN [kPa /inwg] | 28/112.4  |
| Power [hp]                                 | 15  |
| Sound level [dB(A)]                        | 75  |

### Accessoires for DC 5900 L 15 hp P (Part No)

Adaption Kit for Longopac (44248)

# Powered by Propane

Clean burning propane and the reliability of Dustcontrol powered by a 21 hp engine. Designed for the user with class-leading capacity and minimal maintenance requirements, the unit will operate approximately 8 hours on a full tank and the machine is equipped with an external self-discharging cyclonic air filter with visual filter monitor.

## DC Storm LPG

### Packed with Features

- Effective reverse pulse cleaning on the main filter. Extends filter life.
- High efficiency, true cyclonic primary dust separation. Relieves filter loading, minimizes down-time and maximizes up-time.
- H13 HEPA filtration. Filters even the most dangerous respirable particulate and keeps your crew safe.
- Large pneumatic wheels, locking casters and an ergonomic handle. Easily moved and manoeuvred.
- Integrated fork pockets in the chassis for ease of loading and movement from place to place.
- Reliable belt drive and automatic mechanical clutch.
- Low maintenance 21 hp motor with standard oil cooler and low oil pressure shut down.
- Three way catalytic muffler, O<sub>2</sub> sensor, auto shut-down and alarm indication.
- Key start and all operator controls in one place.
- Remote battery charger hook up point and LED battery monitor.
- 2 x 18 W LED Work Lamps for when you get into those out of the way places.
- 2 x USB outlets to keep your mobile devices charged.

### Part No DC Storm LPG c/L

|        |                |
|--------|----------------|
| 119902 | DC Storm LPG a |
| 119900 | DC Storm LPG c |
| 119901 | DC Storm LPG L |



### Technical data

|  |                         |
|--|-------------------------|
| HxWxD [mm/in]                              | 1800x7900x1600/70x31x63 |
| Weight [kg/lb]                             | 375/826                 |
| Tank volume [kg/lb]                        | 15.4/33½                |
| Collection container [m/ft]                | Longopac 25/82 flexible |
| Flow max, fan, US/CAN [m³/h /cfm]          | 820/483                 |
| Negative pressure, max, US/CAN [kPa /inwg] | 30/120                  |
| Engine power (Vanguard) [hp]               | 21                      |
| Final filtration                           | HEPA H13 filter         |
| Sound level [dB(A)]                        | 79                      |



### Supplied with (Part No)

#### Discharge

- a) 75 l /20 US gal container (40070)
- c) 10 x plastic bags (46145)
- L) Longopac 25 m /82 ft (44077)

Work lamp (44410)  
Finefilter, PTFE (44081)  
HEPA H13 filter (42807)



# Compare our Dust Extractors

1-phase

## Dust extractor

| Technical data mini                       | DC 1800                        | DC 1800 XL                     | DC 2900 a/c                    | DC 2900 L                    |
|---|--------------------------------|--------------------------------|--------------------------------|------------------------------|
| HxWxD [mm/in]                             | 780x405x390/31x16x15           | 1160x380x380/46x15x15          | c) 1110x445x570/44x17x22       | 1600x600x800/63x24x31        |
| HxWxD [mm/in]                             |                                |                                | a) 1145x445x630/45x17x25       |                              |
| Weight [kg/lb]                            | 14/31                          | 19/42                          | c) 16/35 a) 22/48              | 63/143                       |
| Hose length Ø38 mm /1.5" [m/ft]           | 5/16                           | 5/16                           | 5/16                           | 5/16                         |
| Collection container [l/gal]              | 20/5.2                         | 60/15.9                        | c) 20/5.3 a) 40/10.6           | L) Longopac                  |
| Flow max, fan, US/CAN 115V [m³/h /cfm]    | 215/126.5                      | 215/126.5                      | 215/126.5                      | 215/126.5                    |
| Negative pressure, max, US/CAN [kPa/inwg] | 21/84.3                        | 21/84.3                        | 24/96.4                        | 24/96.4                      |
| Power [W]                                 | 1340                           | 1340                           | 1340                           | 1340                         |
| Sound level [dB(A)]                       | 68                             | 68                             | 68                             | 80                           |
| Filter area, fine/HEPA filter             | 1.5 m² /0.85 m² 16 ft²/9.1 ft² | 1.5 m² /0.85 m² 16 ft²/9.1 ft² | 1.5 m² /0.85 m² 16 ft²/9.1 ft² | 2.8 m² /3.3 m² 30 ft²/36 ft² |

## Dust extractor

| Technical data midi                       | DC Tromb H 400 a/c/L                | DC Tromb H 400 Twin cc/cL     | DC Tromb 600 L                |
|---|-------------------------------------|-------------------------------|-------------------------------|
| HxWxD [mm/in]                             | 1390x600x780/55x23x31               | 1390x600x1280/55x23x50        | 1390x560x70/55x22x27          |
| Weight [kg/lb]                            | a) 50/110.2 c) 46/101.4 L) 50/110.2 | cc) 71/168 cL) 80/173         | 63/143                        |
| Hose length Ø38 mm /1.5" [m/ft]           | 5/16                                | 5/16                          | 5/16                          |
| Collection container [l/gal]              | a) 40/10.6 c) 20/5.3 L) Longopac    | c) 20/5.3 L) Longopac         | L) Longopac                   |
| Flow max, fan, US/CAN 115V [m³/h /cfm]    | 360/212                             | 360/212                       | 600/353                       |
| Negative pressure, max, US/CAN [kPa/inwg] | 21 (+/- 10%) / 84.3                 | 21 (+/- 10%) / 84.3           | 21 (+/- 10%) / 84.3           |
| Power [W]                                 | 2100                                | 3000                          | 4050                          |
| Sound level [dB (A)]                      | 70                                  | 70                            | 70                            |
| Filter area, fine/HEPA filter             | 1.8 m²/1.5 m² 19.4 ft²/16 ft²       | 1.8 m²/1.5 m² 19.4 ft²/16 ft² | 1.8 m²/1.5 m² 19.4 ft²/16 ft² |

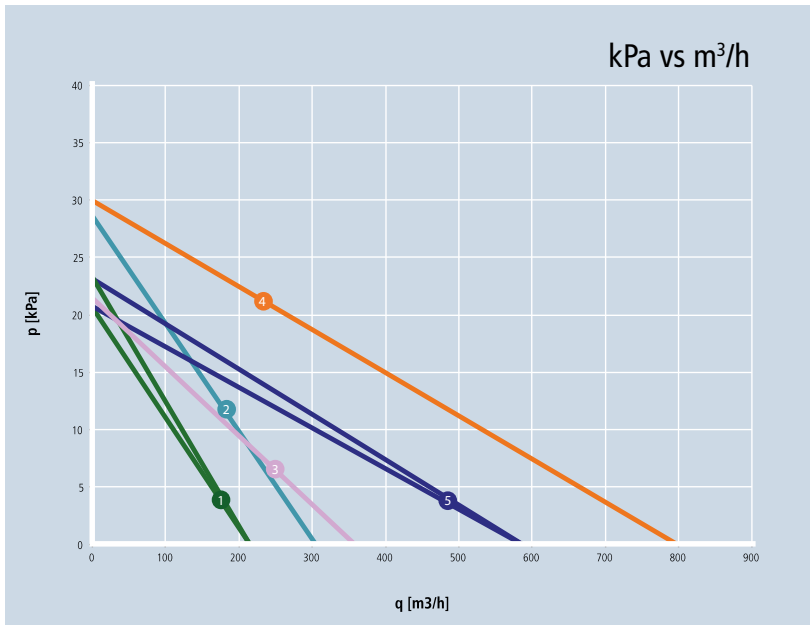
3-phase

## Dust extractor

| Technical data                            | DC Tromb Turbo Direct start      | DC Storm 600 c/a/L        | DC 5900 15 hp kW P        |
|---|----------------------------------|---------------------------|---------------------------|
| HxWxD [mm/in]                             | 1390x600x840/55x23x33            | 11790x780x1160/70x31x46   | 1942x780x1160/76x30x45    |
| Weight [kg/lb]                            | a) 88/194 c) 84/185 L) 86/190    | c) 210/463 a) 214/472     | 200/440.9                 |
| Hose length Ø38 mm /1.5" [m/ft]           | 5/16                             | 5/16                      | 5/16                      |
| Collection container [l/gal]              | a) 40/10.6 c) 20/5.3 L) Longopac | c) 60/15.9 a) 75/19.8     | c) 60/15.9 a) 75/19.8     |
| Flow max, fan, US/CAN [m³/h /cfm]         | 315/186                          | 600/353                   | 800/470.9                 |
| Negative pressure, max, US/CAN [kPa/inwg] | 28/112                           | 21/84                     | 28/112                    |
| Power [hp]                                | 4                                | 10                        | 15                        |
| Sound level [dB(A)]                       | 72                               | 75                        | 75                        |
| Filter area, fine/HEPA filter             | 3.6 m²/3.0 m² 39 ft²/32.3 ft²    | 5 m²/2.7 m² 54 ft²/29 ft² | 5 m²/2.7 m² 54 ft²/29 ft² |

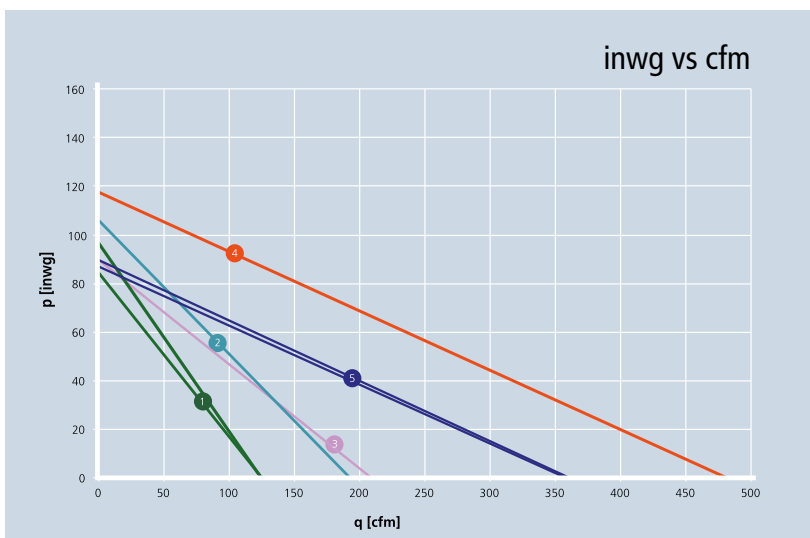
# Compare our Dust Extractors

## Pressure generation and airflow of our machines



kPa vs m<sup>3</sup>/h

- 1 DC 1800, DC 1800XL (21 kPa/215 m<sup>3</sup>/h), DC 2900 (24/215)
- 2 DC 5900 9.2 kW P, DC Tromb Turbo Direct Start (28/315)
- 3 DC Tromb H 400 Twin, DC Tromb H 400 (21/360)
- 4 DC Storm LPG (30/820)
- 5 DC Tromb 600 (21/600), DC Storm 600 (24/600)



inwg vs cfm

- 1 DC 1800, DC 1800XL (84 inwg/126 cfm), DC 2900 (96/126)
- 2 DC 5900 9.2 kW P, DC Tromb Turbo Direct Start (112/186)
- 3 DC Tromb H 400 Twin, DC Tromb H 400 (84/212)
- 4 DC Storm LPG (120/483)
- 5 DC Tromb 600 (84/353), DC Storm 600 (88/353)

# Semi-Mobile Systems



A semi-mobile system increases the accessibility to a powerful dust extractor on each floor. Instead of moving several small and large dust extractors around, multiple users can simultaneously connect their machines or power tools via a hose to a connection point.

# Semi-Mobile Systems

Semi-mobile dust collection systems are a practical solution when work is to be carried out on several floors and by several users at the same time. Each floor is connected to a central extraction system via a hose connection package and is equipped with a connection point for connecting the suction hose to the machine being used.

A Ø76 mm 1/3" hose that forms the main line is taken up through, for example, a lift shaft, refuse disposal chute or stairwell, and run to the dust extractor, which can in turn be connected to a pre-separator to collect larger particles, if necessary. One package is used for each floor to facilitate installation. The sound level is reduced and it becomes easy for each team to clean up regularly, once the task has been completed.



## The Branch Pipe and Hose Connection Package (Prod No 3353) consists of

- 1 x Rubber plug with chain (4016)
- 1 x Hose, 2.5 m, 76 l (2024)
- 2 x Joint Ø76 mm 1/3" (remove rubber ring) (3007)
- 2 x Tube Ø76 mm 1/3" \* 135 (3341)
- 1 x Screw 6\*40 (MC6S)
- 1 x Branch pipe 45°, Ø76 mm 1/3" (300311)
- 1 x Flap valve Ø50/76 mm 1/2"1/3" (3006)

## The Start Box (Prod No 8178)

The Hose Connection Package does not include electrical cables or the Start Box for vacuum producers (ordered separately).

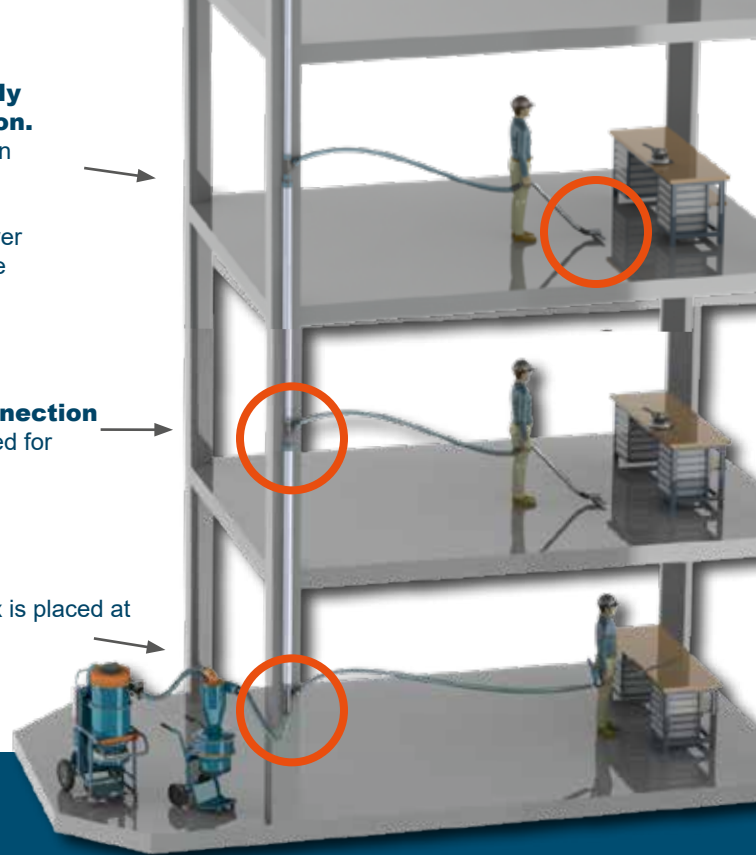
The Start Box (8178)

### Simultaneously Dust Extraction.

Several users can simultaneously connect their machines or power tools via the hose connection point.

One **Hose Connection Package** is used for each floor.

The **Start Box** is placed at the base level.



**Hose Connection Package** Part No 3353

**Start Box** Part No 8178

**Powerful Dust Extraction**

DC 5900 Part No 119320  
DCF Storm Part No 70701







# Air Cleaners



## Air Cleaner

# DC AirCube 500

DC AirCube 500 has been developed for ease of use and durability. The fan unit is a radial blower which is especially designed to build up high pressure across its entire flow range. This means that the unit generates a large amount of air flow during the entire lifetime of the filter. An exhaust hose can be used to create negative pressure in a sealed room. The fan has two speed settings, which means that the unit can be run economically, for example during the night.

### Supplied with (Part No)

HEPA H13 filter (42692)  
Pre-filter (42690)

### Part No DC AirCube 500

112505 115V /60Hz, US/CAN

1-phase 

### Technical data

|   |                              |
|---|------------------------------|
| HxWxD [mm/in]                           | 380x340x495/<br>15x13.4x19.5 |
| Weight [kg/lb]                          | 13/28.7                      |
| Inlet Ø [mm/in]                         | 380x340/15x13.4              |
| Outlet Ø [mm/in]                        | 125/5                        |
| Power, fan 115/230 [W]                  | 195/210                      |
| Flow max, open inlet<br>115V [m³/h/cfm] | 470/276                      |
| Flow max, open inlet<br>230V [m³/h/cfm] | 500/294                      |
| Pre-filter area [m²/ft²]                | 0.18/1.9                     |
| HEPA filter area [m²/ft²]               | 4.56/49                      |
| Filter class                            | H13                          |
| Sound level [dB(A)]                     | 45-65                        |

### Accessories (Part No)

Hose 125 (2420)  
Funnel connection (42753)  
Hose clamp (4138)  
Roof bracket (42724)



DC AirCube 500 and Funnel connection

Dustcontrol's high-efficiency air cleaner – the DC AirCube – is equipped with a HEPA H13 filter to separate dust and particles down to 0.3 microns. The DC AirCube contributes to a healthier working environment.



Dust class H (degree of permeability  $\leq 0.005\%$ ) for particles as small as  $0.1 \text{ mg/m}^3$  and carcinogenic particles. According to IEC/EU 60335-2-69

## Air Cleaner

# DC AirCube 1200

The DC AirCube 1200 is a highly efficient and robust air cleaner with the ability to clean the air even in large rooms, at a rate of up to 1060 m<sup>3</sup>/h /624 cfm. The encapsulated fan housing contains a radial blower type fan that builds up high pressure across its entire flow range, which provides effective air cleaning for the entire lifetime of the filter. The speed of the fan is also continuously variable in order to save energy. The DC AirCube 1200 is equipped with both a HEPA H13 filter that captures the smallest particles and a light that indicates when it is time to replace the filter.

### Part No DC AirCube 1200

111003 115V /60Hz, US/CAN



### Supplied with (Part No)

HEPA H13 filter (42940)  
Pre-filter (42918)

### Accessories (Part No)

Hose kit (42657)  
Bend 90° (42660)

### Technical data

|  |                            |
|--|----------------------------|
| HxWxD [mm/in]  | 869x458x598/<br>35x18x23.5 |
| Weight [kg/lb]                                       | 23/51                      |
| Inlet/Outlet Ø [mm/in]                               | 250/315<br>9.8/12.4        |
| Power, fan 115/230 [W]                               | 375/385                    |
| Flow max, open inlet<br>230V [m <sup>3</sup> /h/cfm] | 1060/624                   |
| Pre-filter area [m <sup>2</sup> /ft <sup>2</sup> ]   | 0.40/4.3                   |
| HEPA filter area [m <sup>2</sup> /ft <sup>2</sup> ]  | 5/54                       |
| Filter class   | H13                        |
| Sound level [dB(A)]                                  | 60-68                      |

# DC AirCube 2000

With a capacity of approximately 1.850 m<sup>3</sup>/h /1089 cfm the DC AirCube 2000 is the Dustcontrol's most powerful cleaner. The DC AirCube 2000 has a robust, stainless-steel chassis and an encapsulated fan with variable speed setting. With its ergonomic design, it is easy to carry and transport. It can also be operated when positioned horizontally.

The DC AirCube 2000 has a HEPA H13 filter with an area totalling 10 m<sup>2</sup> /107 ft<sup>2</sup>. An integrated light indicates when it is time to replace the filter.

### Part No DC AirCube 2000

102004 115V /60 Hz, US/CAN



### Supplied with (Part No)

HEPA H13 filter (42896)  
Pre-filter (42917)

### Accessories (Part No)

Hose kit (42657)  
Bend 90° (42660)

### Technical data


|  |                             |
|--|-----------------------------|
| HxWxD [mm/in]  | 1019x512x547<br>/40x20x21.5 |
| Weight [kg/lb]   | 30/66                       |
| Inlet/Outlet Ø [mm/in]                                   | 315/315<br>12.4/12.4        |
| Power, fan 115/230 [W]                                   | 375/750                     |
| Flow max, open inlet<br>230V [m <sup>3</sup> /h/cfm] max | 1850/1089                   |
| Pre-filter area [m <sup>2</sup> /ft <sup>2</sup> ]       | 0.5/5.4                     |
| HEPA filter area [m <sup>2</sup> /ft <sup>2</sup> ]      | 10/107                      |
| Filter class   | H13                         |
| Sound level [dB(A)]                                      | 60-68                       |





Dustcontrol

Part no 4613  
Dustcontrol Part n

A photograph of a decontamination system, likely a glovebox or hot cell. The system is dark-colored with a viewing window that is illuminated from within, showing a bright, hazy interior. A coiled black cable hangs from the top of the system. The overall scene is dimly lit, with some background lights visible in the upper left corner.

# Decontamination Systems

## Compact Vacuum Systems

# DC Box

The DC Box is an especially designed dust extraction cabinet that protects against hazardous dust during decontamination and cleaning before servicing or repairing machines and tools. The DC Box is equipped with a blow gun and a suction hose for vacuum cleaning. Larger particles and debris fall down into a plastic bag attached to the bottom of the cabinet.

The DC Box is easy to work with. Tools and machines are placed onto the rotating worktable and slid in through the side door. These are then cleaned either by vacuuming or using compressed air. The fine dust is vacuumed up and transported away via a tubing system to a complete central unit located either in or outdoors. The size of the central unit and dimensioning of the tubing system is tailored to the needs of the customer. The system can be expanded so that it can also be used as a central extraction system with connections that are easily accessible across the entire worksite.

## Compact, Standard or Custom?

The DC Box is available in three versions: Compact, Standard and Custom. The **DC Box Compact** uses the DC AirCube 500 air cleaner as its vacuum source and it is easy to use in cramped premises where there is no room for tubing and a central dust extractor.

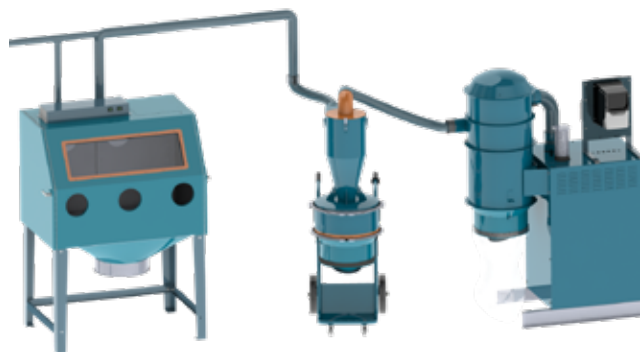
The **DC Box Standard** is the ideal solution for most users. Equipped with a pre-separator and DC 11-Module 11 kW p /15 hp central unit.

**DC Box Custom.** If you want to be able to roll taller equipment directly into the cabinet for decontamination, then the DC Box Custom is the solution for you. DC Box Custom is customised after your requirements.

### Part No Description

|       |  |
|-------|--|
| 7470  | DC Box   |
| 42014 | Trolley  |
| 74701 | DC Box Compact with DC AirCube 500, 230V /50Hz, EU |
| 74702 | DC Box Compact with DC AirCube 500, 230V /50Hz, UK |
| 7999  | DC Box Custom                                      |

Contact our sales representative for a quotation DC Box Custom.



DC Box

DCF Tromb

DC 11-Module

### Installation example for DC Box Standard



Compressed air connection and blow gun nozzle.  
Suction hose for easy cleaning inside the cabinet.

## Compact Vacuum Systems

# DC Box Standard

### Part No Description

|             |  |
|-------------|--|
| 7470        | DC Box   |
| 42014       | Trolley  |
| 7074        | DCF Mobile Pre-Separator   |
| 14146B10110 | DC 11-Module/11kW P, 400V /50Hz, EU. Base panel incl.  |
| 1414P910110 | DC 11-Module/15 hp, 460V /60Hz, US/CAN. Panel not incl.<br>(Tubing system in accordance with separate specification) |

Contact your sales representative for correct dimensioning and a quotation for DC Box Standard.

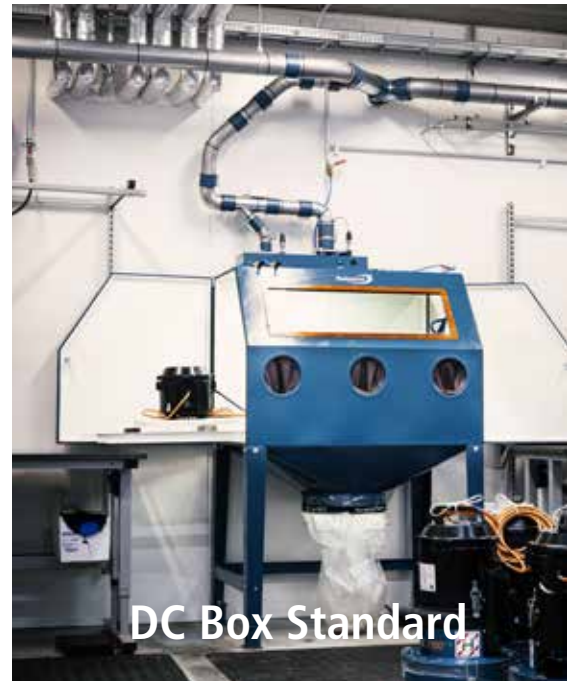
| TECHNICAL DATA         | DC Box Compact and DC Box Standard |
|------------------------|------------------------------------|
| HxWxD [mm/in]          | 1800x1200x800/71x48x32             |
| Weight [kg/lb]         | 160/353                            |
| Inlet/Outlet Ø [mm/in] | 76/3                               |
| Hose length [m/ft]     | 2/6.5                              |

| TECHNICAL DATA              | DC AirCube 500           |
|-----------------------------|--------------------------|
| HxWxD [mm/in]               | 380x340x495/15x13.4x19.5 |
| Weight [kg/lb]              | 13/28.7                  |
| Inlet/Outlet Ø 125 [mm/in]  | 380x340/15x13.4          |
| Flow max, fan, EU [m³/h]    | 500                      |
| Flow max, fan, US/CAN [cfm] | 294                      |

| TECHNICAL DATA   | DC 11-Module 11 kW P/15hp |
|--|---------------------------|
| HxWxD [mm/in]  | 1800x1000x1300 /71x40x51  |
| Weight [kg/lb]   | 260/573                   |
| Inlet/Outlet Ø [mm/in]   | 108/7                     |
| Filter cleaning require regulated<br>4 bar clean, dry air [l/s /gph] | 4/3 /804                  |
| Flow max, fan, EU [m³/h]   | 800                       |
| Flow max, fan, US/CAN [cfm]  | 471                       |
| Negative pressure, max, EU [kPa]                                     | 22                        |
| Negative pressure, max, US/CAN [inwg]                                | 88                        |
| Filter area [m²/ft²]   | 8.4 /90.4                 |
| Degree of separation [%]   | >99.9                     |
| Sound level [dB(A)]  | 60-63                     |



DC Box Compact



DC Box Standard



DC Box Custom



# Pre-Separators



# About Pre-Separators

Pre-Separators can be used in all applications where the extracted material is coarse or voluminous. These can be placed in the actual workplace for separate handling or recovery of the extracted material, or centrally to relieve filter loading.

Pre-Separators separate material from the air flow using the action of a cyclone or with inertial separation.

The Cyclone Principle is very effective in separating particles down to 1/100 mm.

Inertial separators are generally configured as containers with the inlet and outlet in the same wall of the container. When the air flow changes direction abruptly, separation occurs for the particles with higher relative mass.

## Cyclone Pre-Separators

| TYPE OF MATERIAL   | Air flow [m <sup>3</sup> /h] | Select Pre-Separator     |
|--|------------------------------|--------------------------|
| All types, particularly where a large percentage is fine particulate | 100–200                      | DCF 60, F 2500, DCF 2800 |
|  | 100–500                      | DCF Mobil                |
|  | 200–500                      | F 3500                   |
|  | 500–700                      | F 8000                   |
|  | 500–1000                     | F 11000                  |
|  | 1000–4000                    | F 20000                  |
|  | 2000–5000                    | F 30000                  |

| DISCHARGE TO             | Volume  | Equipment  |
|--------------------------|---------|--|
| Plastic bag              | lesser  | Discharge cone                                   |
| Compacted in plastic bag | greater | Auger Compactor                                  |
| Open Container, Conveyor | lesser  | Foot Valves/Auto Foot Valve/<br>Discharge Valves |
|                          | greater | Peristaltic Airlock                              |
| Small Container          | lesser  | With or without plastic bag                      |
| Tipping Container        | greater |  |

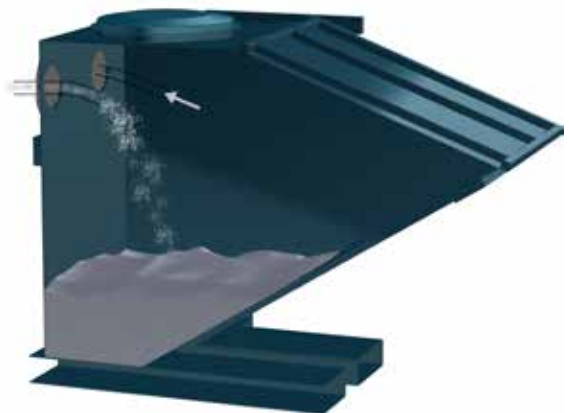
## Inertial Pre-Separators

| MATERIAL TYPE    | Air flow [m <sup>3</sup> /h] | Volume   | Select Pre-Separator |
|------------------|------------------------------|----------|----------------------|
| Coarse and dense | 250-2000                     | moderate | Tipping Container    |
|                  | 250-2000                     | large    | Large Container      |



### Cyclone Principle

Meaning that the inlet is mounted tangentially on the body and the air flow is thus forced against the inside of the cyclone.



### Inertial Principle

Meaning that the air stream flows into the container and abruptly changes course.

## Mobile Pre-Separators


### DCF Tromb

The DCF Tromb a/c/L is ideal for floor grinding and semi-mobile systems where large quantities of dust are handled. The pre-separator reduces the strain on the extraction source and is equipped with a intellibag/Longopac/container-solution for dust-free bag replacement, therefore allowing the user to avoid unnecessary and time-consuming shutdowns.

| TECHNICAL DATA               | DCF Tromb                |
|------------------------------|--------------------------|
| HxWxD [mm/in]                | 1290x600x780/51x23x31    |
| Weight [kg/lb]               | L) 32/70<br>C) 27/59     |
| Inlet Ø [mm/in]              | 76/3                     |
| Collection container [l/gal] | C) 20/5.3<br>L) Longopac |



| Part No | Description |
|---------|-------------|
| 707002  | DCF Tromb a |
| 707001  | DCF Tromb c |
| 707000  | DCF Tromb L |

-  **Supplied with (Part No)**
- DCF Tromb a  
5 x plastic bags (42285)
  - DCF Tromb c  
10 x plastic bag (43619)
  - DCF Tromb L  
Longopac (432177)


### DCF Storm

The DCF Storm is ideal for floor grinding and semi-mobile systems and could be set apart to handle large and heavy quantities of dust. The pre-separator relieves the loading on the filter in the vacuum source and is equipped with a Longopac solution for dust-free bag changing, so that the user can minimise unnecessary and time-consuming stoppages. Also available as a standard “c” model with an intellibag.

| TECHNICAL DATA              | DCF Storm            |
|-----------------------------|----------------------|
| HxWxD [mm/in]               | 185x70x108 /73x27x42 |
| Weight [kg/lb]              | 46/101               |
| Inlet Ø [mm/in]             | 108/4                |
| Flow max, fan, EU [m³/h]    | 700                  |
| Flow max, fan, US/CAN [cfm] | 412                  |



| Part No | Description |
|---------|-------------|
| 70700   | DCF Storm c |
| 70701   | DCF Storm L |

-  **Supplied with (Part No)**
- DCF Storm L, Longopac 25 m /82 ft (44077)  
or DCF Storm c, plastic bags (46145)

## Mobile Pre-Separators

# DCF Cyclone Separator Cover

When large quantities of dust are produced, a DC 5900, for example, can be supplemented with a cyclone separator cover that is fitted directly onto a standard barrel.

### Part No Description

7367 Cyclone separator cover

| TECHNICAL DATA  | DCF Storm |
|---|-----------|
| HxWxD [mm/in]   | 580/23    |
| Weight [kg/lb]  | 10/22     |
| Inlet/Outlet Ø [mm/in]  | 76/3      |
| Cyclone diameter Ø [mm/in]  | Ø250/10   |
| Barrel diameter Ø [mm/in]<br>(For a standard barrel 200/52.8 [l/gal]) | 620/24    |



## DCF 60

The DCF 60 Pre-Separator can handle large quantities of dust. Due to its large inlet the Pre-Separator is also well suited to separate coarse dirt. Perfect for wood floor grinding.

### Part No Description

7069 DCF 60 with wheel set

| TECHNICAL DATA               | DCF 60                |
|------------------------------|-----------------------|
| HxWxD [mm/in]                | 1060x380x380/42x15x15 |
| Weight [kg/lb]               | 10/22                 |
| Inlet Ø [mm/in]              | Ø62 /2.4              |
| Outlet Ø [mm/in]             | Ø50 /2                |
| Collection container [l/gal] | 55/14.5               |



## DCF 2800

The DCF 2800 Pre-Separator is often used in combination with the DC 2900 dust extractor to relieve the loading on the filter.

### Part No Description

7372 DCF 2800

| TECHNICAL DATA               | DCF 2800              |
|------------------------------|-----------------------|
| HxWxD [mm/in]                | 1000x540x450/39x21x18 |
| Weight [kg/lb]               | 10/22                 |
| Inlet Ø [mm/in]              | Ø50/2                 |
| Cyclone diameter [mm/in]     | Ø250/10               |
| Collection container [l/gal] | 40/10                 |



### Supplied with (Part No)

42702 Plastic Bags



## DCF Wheelbarrow

The DCF Wheelbarrow is a mobile pre-separator designed like a wheelbarrow for ease of use. A small cyclone with two inlets is fitted in the container. Two tools, cleaning implements etc. can be connected at the same time. The container also has a special hatch so that material can be shovelled in and out.



### TECHNICAL DATA DCF Wheelbarrow

|                            |                         |
|----------------------------|-------------------------|
| HxWxD [mm/in]              | 1200x1350x640 /47x53x25 |
| Weight [kg/lb]             | 50/110                  |
| Inlet/Outlet Ø [mm/in]     | Ø76/3                   |
| Cyclone diameter Ø [mm/in] | Ø250/10                 |
| Filling volume [l/gal]     | 120/32                  |

### Part No Description

|      |                 |
|------|-----------------|
| 7130 | DCF Wheelbarrow |
|------|-----------------|

## DCF Tipping Container

Tipping containers can be used as inertial separators by equipping the container with a divider baffle and fitting hoses onto the inlet/outlet connections on the rear wall of the container.

Inertial separation is particularly suitable when large quantities of coarse material are involved.



### TECHNICAL DATA DCF Tipping Container 0.6m³/158 gal

|                                   |                          |
|-----------------------------------|--------------------------|
| HxWxD [mm/in]                     | 1180x1080x1590 /46x42x62 |
| Weight [kg/lb]                    | 240/529                  |
| Total volume [m³/gal]             | 0.6/158                  |
| Filling volume [m³/gal]           | 0.3/79                   |
| Negative pressure, max [kPa/inwg] | 40/160                   |

### TECHNICAL DATA DCF Tipping Container 2.5m³/660 gal

|                                    |                       |
|------------------------------------|-----------------------|
| HxWxD [mm/in]                      | 147x128x218 /58x50x86 |
| Weight [kg/lb]                     | 570/1257              |
| Total volume [m³/gal]              | 2.5/660               |
| Filling volume [m³/gal]            | 1.3/343               |
| Negative pressure, max [kPa/ inwg] | 40/160                |

### Part No Description

|      |                |
|------|----------------|
| 7196 | 0.6 m³/158 gal |
| 7198 | 2.5 m³/660 gal |



## The most hazardous dust is the dust you can't see.

The smaller a particle is, the deeper into the pulmonary system it penetrates. Respirable dust, the dust we inhale, is made up of particles smaller than 5 thousands of a millimetre (5  $\mu\text{m}$ ). Because the particles are so small, they can penetrate into the deepest parts of the pulmonary system where the air moves too slowly to be able to breathe them out again.

The lungs' way of protecting themselves is to wrap the foreign particles in nodules of connective tissue, which, in time, leads to pneumoconiosis or COPD (Chronic Obstructive Pulmonary Disease). Some types of particles, such as silica and asbestos dust, cannot be broken down by the body and are also sharp, which is why they continue to cause damage long after they have become lodged in the lungs.

The best protection is to remove dust at the source and never allow it to reach the air. Dustcontrol has developed suction casings for most handheld and stationary machines, and also produces tailor-made suction casings.

# Classification of Dust Extractors and HEPA Filters

Dust extractors are used to improve the working environment, and to reduce levels of hazardous dust in the air to a minimum. This places great demands on the ability of the dust extractor to separate fine dust. We use a fine filter in our mobile dust extractors, which separates most of the dust. But in order to capture close to 100% of the finest and most dangerous particles, we always complete the design with a HEPA H13 filter.

Here at Dustcontrol, we use conical pleated filters in all of our dust extraction units. A pleated filter has a very large area in relation to its physical size. The dust extractors can therefore be compact in relation to the large filter area they contain.

Only original Dustcontrol filters are tested and approved for use in our machines. The use of other types of filters could lead to the leaking of hazardous dust and/or machine breakdown. Dustcontrol's warranty only applies to machines equipped with original Dustcontrol spare parts. The filters are certified in accordance with current European requirements for dust extraction. This ensures that, with correct handling, optimum filtration will be achieved. Follow the instructions when handling filters, so that they can be replaced without exposure to hazardous dust.

To ensure that the filters comply with the requirements of relevant regulations for health and safety at work, a number of different testing standards are used. These are described below:

## Test methods

The test methods used in current standards for dust extractors and filters are always based on particle counting. By injecting particles before the filter and by using a particle counter to determine the concentration before and after the filter, the penetration can be calculated (a penetration of 0.1% is equal to a degree of separation of 99.9%). The test is carried out in several

stages by individually examining the filter media, the complete filter cartridge and, in some cases, also the complete unit.

## HEPA filters — High Efficiency Particulate Air Filters

When classifying HEPA filters, Dustcontrol uses the strict HEPA standard (EN 1822-1). It is divided into different levels (E10 to H14) depending on filtration efficiency. Dustcontrol applies level H13, which can separate up to 99.95% of the particles between 0.15 and 0.30  $\mu\text{m}$  in size. This particle size is used because it is the hardest to separate – both larger and smaller particles are easier to capture in a filter.

## Dust extractors

In IEC-60335-2-69 (EN-60335-2-69), the standard for testing wet and dry extractors, dust extractors are classified into three categories – **L for low, M for medium and H for high** – where the H category is the most stringent. (Please note: do not confuse this “H” with that in HEPA H13). The category required for a specific application is decided on the basis of the permitted maximum concentration for that type of dust (MAK) in the working environment or by local regulations.

## The test according to EN-60335-2-69 comprises two parts:

**1. A test of the filter system** – in our case, a fine filter and a HEPA H13 filter. To achieve category H, a degree of separation of 99.995% is required, where 90% of the test particles must be smaller than 1.0  $\mu\text{m}$ . Our fine filters comply with category M, and our HEPA H13 filters with category H.

**2. A test of the “assembled unit”** – in our case, a complete dust extractor. Here, 99.995% efficiency is also required, however 10% of the particles must be smaller than 1.0  $\mu\text{m}$ , 22% smaller than 2.0  $\mu\text{m}$ , and 75% smaller than 5.0  $\mu\text{m}$ .



The filter systems in all Dustcontrol dust extractors are built to comply with the stringent IEC machine classification H.



## Classification of our Dust Extractors



| NAME          | CLASSIFICATION | STANDARD       | EFFICIENCY | PARTICLE SIZE  | EXAMPLE   | MAK (Maximum Workplace Concentration)                                  |
|---------------|----------------|----------------|------------|----------------|-----------|--|
|               | L=             |                | > 99%      |                |           | > 1.0 mg/m <sup>3</sup>  |
|               | M=             |                | > 99,9%    |                |           | > 0.1 mg/m <sup>3</sup>  |
| IEC* standard | H=             | IEC 60335-2-69 | > 99.995%  | 0.1 - 5.0 µm** | H=99.995% | < 0.1 mg/m <sup>3</sup> and carcinogenic substances including asbestos |

\* IEC: International Electrotechnical Commission

\*\* Part 1: 90 % < 1.0 µm

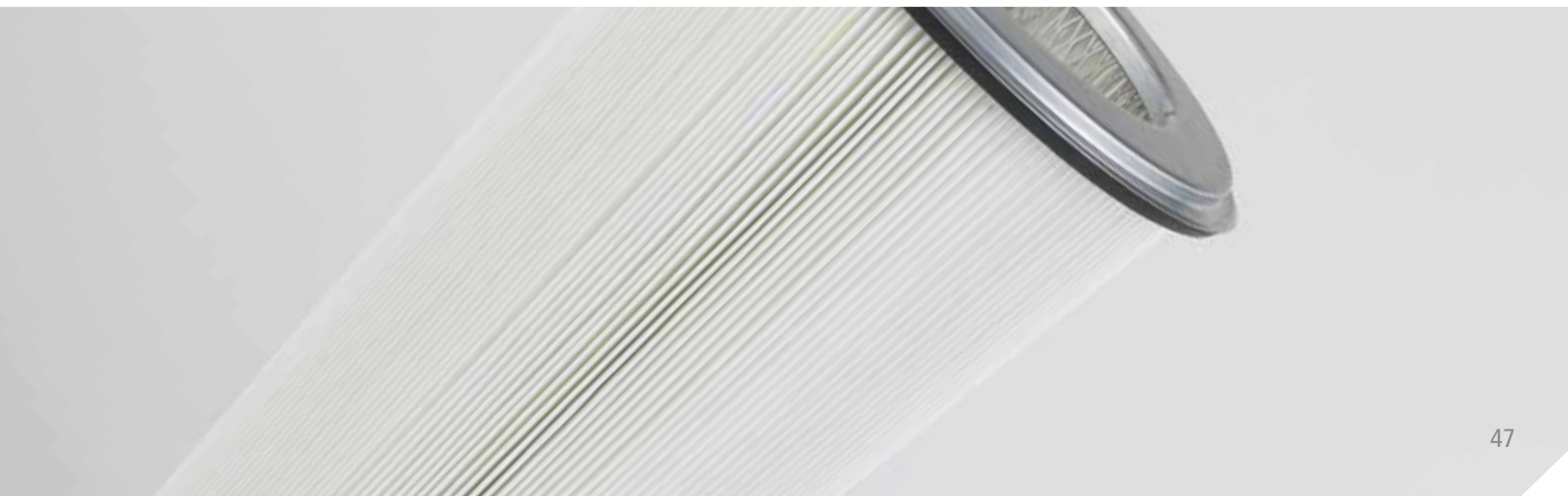
Part 2: 10 % < 1.0 µm  
22 % < 2.0 µm  
75 % < 5.0 µm

## Classification of our HEPA Filters




| NAME  | CLASSIFICATION | STANDARD  | EFFICIENCY | PARTICLE SIZE               | EXAMPLE            |
|-------|----------------|-----------|------------|-----------------------------|--------------------|
|       | E10            |           | 85%        | MPPS** between 0.15–0.30 µm |                    |
|       | E11            |           | 95%        |                             |                    |
|       | E12            |           | 99.5%      |                             |                    |
| HEPA* | H13            | EN 1822-1 | 99.95%     |                             | HEPA H13 = 99.95 % |

\* High Efficiency Particle Air filter, \*\* Most Penetrating Particle Size



# Accessories and Hoses



In order for you to get the most out of your Dustcontrol, you need the right accessories. We supply cleaning equipment in all sorts of designs and materials. If something is missing, we can even manufacture customised solutions. Please speak to your sales representative for more information.



## Accessories and Consumables

# Cleaning accessories Ø38 mm / 1.5"



| No | Part No | Description   |
|----|---------|---|
| 1  | 7038    | Suction nozzle  |
| 2  | 7047    | Suction brush W 200 mm / 7.8"                                     |
| 3  | 7048    | Pipe nozzle RB 100  |
| 4  | 7049    | Pipe nozzle RB 200  |
| 5  | 7276*   | Tapered nozzle  |
| 6  | 7365    | Flat nozzle   |
| 7  | 7257    | Suction pipe Ø38 mm / 1.5"  |
| 8  | 7258    | Aluminium wand  |
| 9  | 7259    | Aluminium wand, with wear strip                                   |
| 10 | 7260    | Chrome steel extension wand, L = 715 mm / 28"                     |
| 11 | 7261    | Aluminium extension wand, L = 705 mm / 27"                        |
| 12 | 7264*   | Tapered nozzle  |
| 13 | 7213    | Chrome steel flat nozzle, L = 400 mm / 15.7"                      |
| 14 | 7035    | Chrome steel hand pipe  |
| 15 | 7262    | Chrome steel hand pipe, curved                                    |
| 16 | 7235*   | Cast aluminium floor tool 370 mm / 14.5"                          |
| 17 | 7236*   | Cast aluminium floor tool 450 mm / 17.7"                          |
| 18 | 7320/21 | Moulded plastic floor tool 320 mm / 12.6", with rubber wipe/brush |
| 19 | 7322/23 | Moulded plastic floor tool 370 mm / 14.5", with rubber wipe/brush |
| 20 | 7300    | Rubber floor tool   |
| 21 | 7278*   | Suction brush   |
| 22 | 7275    | Rubber part of suction brush, 7278                                |
| 23 | 7263    | Brush for 7275, 7278  |
| 24 | 726301  | ESD brush for 7278, 7279  |
| 25 | 7398    | Brush for 7278, 7279, hard, white                                 |
| 26 | 7237*   | Cast aluminium floor tool 370 mm / 14.5", with wipe/brush         |



\* To order an antistatic (ESD) version, add E to the end of Part No.

## Accessories and Consumables

# Cleaning accessories Ø50 mm / 2"



ERGO Grip for better ergonomoy.  
Fits on all Ø50 mm / 2" suction  
pipes and Ø50 mm / 2" bulk nozzle.

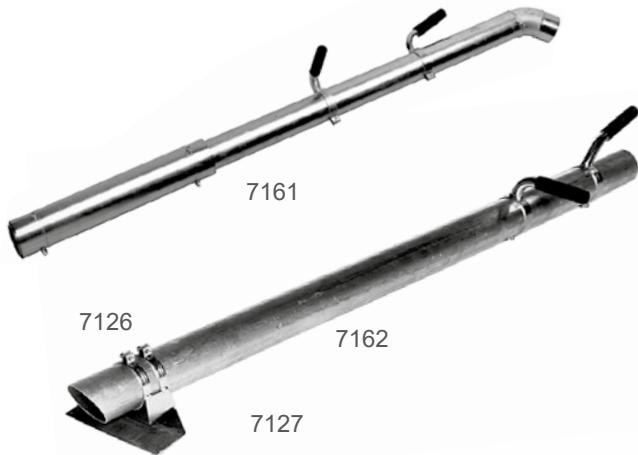


\* To order an antistatic (ESD) version,  
add E to the end of Part No.

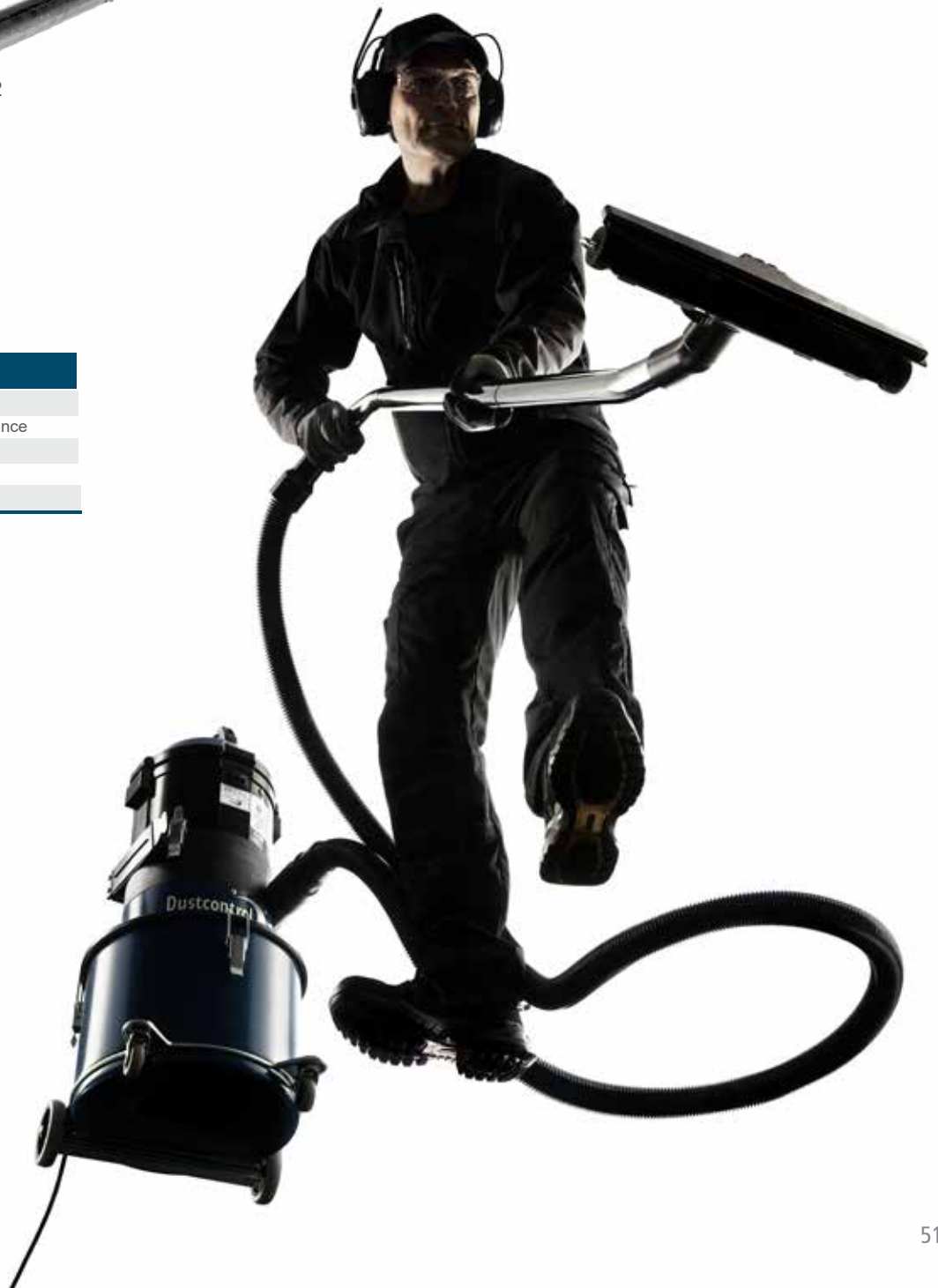
| No | Part No | Description                             |
|----|---------|---|
| 1  | 7266    | Aluminium wand                          |
| 2  | 7267    | Aluminium wand, with wear strip         |
| 3  | 7265    | Chrome suction pipe Ø50 mm/ 2"          |
| 4  | 7268    | Chrome steel extension wand, 710 mm/28" |
| 5  | 7033    | Chrome steel hand pipe                  |
| 6  | 7271    | Chrome steel hand pipe, curved          |
| 7  | 7285    | ERGO Grip handle                        |
| 8  | 7272*   | Tapered nozzle                          |
| 9  | 7277*   | Tapered nozzle                          |
| 10 | 7212    | Flat nozzle, L = 400 mm /15.7"          |
| 11 | 7295    | Bulk nozzle                             |
| 12 | 7013    | Rubber floor tool                       |
| 13 | 7281*   | Floor nozzle W 200 mm /7.8"             |
| 14 | 7238*   | Cast aluminium floor tool, 500 mm/19.6" |
| 15 | 7307    | Gulper floor tool, aluminium            |
| 16 | 7149    | Chip nozzle 50x70x243 / 1.9"x2.7"x9.6"  |
| 17 | 7030    | Suction nozzle                          |
| 18 | 7279*   | Suction brush                           |
| 19 | 7016*   | Suction nozzle with brush               |
| 20 | 7274    | Rubber part for suction brush           |
| 21 | 7263    | Brush for 7274, 7279                    |
| 22 | 726301* | ESD brush for 7278, 7279                |
| 23 | 7398    | Brush for 7278, 7279, hard, white       |

## Accessories and Consumables

# Cleaning accessories $\varnothing 76$ mm / 3"



| Part No | Description               |
|---------|---------------------------|
| 7126    | Clamp for scraper         |
| 7127    | Scraper for suction lance |
| 7129    | Handle, complete          |
| 7161    | Bulk nozzle               |
| 7162    | Suction lance             |



# About Suction Hoses

Hoses need to have different characteristics depending on their intended use. Dustcontrol supplies hoses that are:

- wear-resistant, lightweight and flexible
- unaffected by extremes of temperature
- crushproof
- antistatic

When using long suction hoses that are coupled together, the hose closest to the suction casing should be the one with the smallest diameter and it should be no longer than 9,8 ft /3 m. Coupling should be carried out using external couplings that are easy to use.

## Our selection of Suction Hoses

| PRODUCT                                    | Part No | Dimension Ø [mm/in] | Standard length [m/ft]              | Colour      | Material | Temp °F /°C max/min | Anti-static/ESD | Abrasion resistance | UV and ozone resistance | Resistance to welding fumes | Resistance to solvent and oil | FDA |
|--|---------|---------------------|-------------------------------------|-------------|----------|---------------------|-----------------|---------------------|-------------------------|-----------------------------|-------------------------------|-----|
| Suction hoses, standard                    | 2001    | 76/3                | 10,15/32,49                         | Blue        | PE       | 140/-22/+60/-30     | No              | 2                   | 2                       | 3                           | 3                             |     |
|  | 2401    | 50/2                | 5,10,15, 20,25,30/16,32,49,65,82,98 | Blue        | PE       | 140/-22/+60/-30     | No              | 2                   | 2                       | 3                           | 3                             |     |
|  | 2111    | 38/1.5              | 5,10,15, 20,25,30/16,32,49,65,82,98 | Blue        | PE       | 140/-22/+60/-30     | No              | 2                   | 2                       | 3                           | 3                             |     |
|  | 2112    | 32/1.25             | 5,10,15, 20,25,30/16,32,49,65,82,98 | Blue        | PE       | 140/-22/+60/-30     | No              | 2                   | 2                       | 3                           | 3                             |     |
|  | 2113    | 25/1                | 5,10,15, 20,25,30/16,32,49,65,82,98 | Blue        | PE       | 140/-22/+60/-30     | No              | 2                   | 2                       | 3                           | 3                             |     |
| Suction hoses, heat-resistant              | 2004    | 50/2                | 5,10,15, /16,32,49                  | Grey        | PP(EPDM) | 194/-40/+90/-40     | No              | 3                   | 2                       | 1                           | 4                             |     |
|  | 2003    | 38/1.5              | 5,10,15/16,32,49                    | Grey        | PP(EPDM) | 194/-40/+90/-40     | No              | 3                   | 2                       | 1                           | 4                             |     |
| Suction hoses, antistatic                  | 2024*   | 76/3                | 10,15/32,49                         | Black       | PE       | 140/-4/+60/-20      | Yes             | 2                   | 2                       | 3                           | 3                             |     |
|  | 2013*   | 50/2                | 5,10,15, 20,25,30/16,32,49,65,82,98 | Black       | PE       | 140/-4/+60/-20      | Yes             | 2                   | 2                       | 3                           | 3                             |     |
|  | 2012*   | 38/1.5              | 5,10,15, 20,25,30/16,32,49,65,82,98 | Black       | PE       | 140/-4/+60/-20      | Yes             | 2                   | 2                       | 3                           | 3                             |     |
|  | 2005*   | 32/1.25             | 5,10,15/16,32,49                    | Black       | PE       | 140/-4/+60/-20      | Yes             | 2                   | 2                       | 3                           | 3                             |     |
|  | 2025*   | 25/1                | 5,10,15/16,32,49                    | Black       | PE       | 140/-4/+60/-20      | Yes             | 2                   | 2                       | 3                           | 3                             |     |
|  | 2027*   | 38/1.5              | 5,10,15/16,32,49                    | Black       | PE       | 140/-4/+60/-20      | Yes             | 2                   | 2                       | 3                           | 3                             |     |
| Suction hoses, PU extra abrasion-resistant | 2028*   | 50/2                | 5,10,15/16,32,49                    | Black       | PE       | 140/-4/+60/-20      | Yes             | 2                   | 2                       | 3                           | 3                             |     |
|  | 2056    | 76/3                | 10/32                               | Transparent | PU       | 194/-40/+90/-40     | Yes**           | 1                   | 1                       | 3                           | 1                             |     |
|  | 2054    | 50/2                | 10/32                               |             | PU       | 194/-40/+90/-40     | Yes**           | 1                   | 1                       | 3                           | 1                             |     |
| Super D super-elastic                      | 2055    | 38/1.5              | 10/32                               |             | PU       | 194/-40/+90/-40     | Yes**           | 1                   | 1                       | 3                           | 1                             |     |
|  | 2038    | 38/1.5              | 15/49                               | Black/white | PVC      | 185/-23/+85/-5      | No              | 2                   | 2                       | 2                           | 4                             |     |
| Suction hose                               | 2039    | 50/2                | 15/49                               | Black/white | PVC      | 185/-23/+85/-5      | No              | 2                   | 2                       | 2                           | 4                             |     |
|  | 44140   | 38/1.5              | 10/32                               | Transparent | PU       | -40 to +90          |                 | 2                   | 2                       | 2                           | 2                             | x   |
| Suction hose                               | 44141   | 50/2                | 10/32                               | Transparent | PU       | -40 to +90          |                 | 2                   | 2                       | 2                           | 2                             | x   |
| Suction hose                               | 44142   | 76/3                | 10/32                               | Transparent | PU       | -40 to +90          |                 | 2                   | 2                       | 2                           | 2                             | x   |

\* To order an antistatic (ESD) version, add the letter E to the end of the Part No.

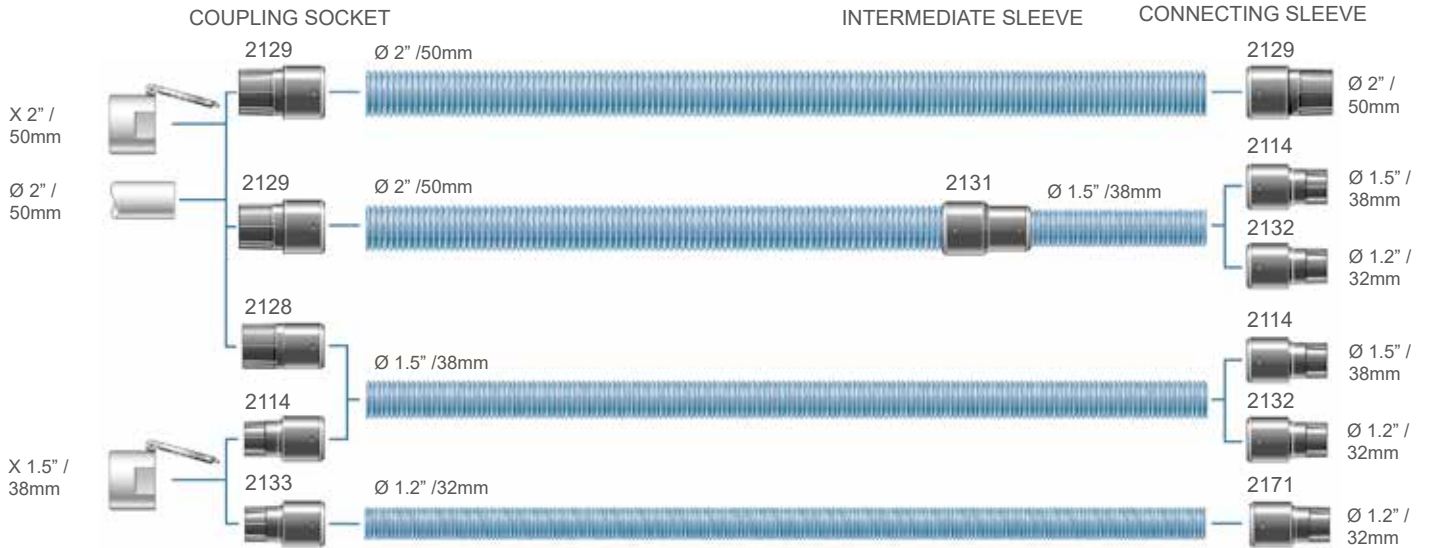
\*\* The wire helix must be bared and left in contact with conductive material for static discharge.

### Resistance Scale

- 1 Excellent
- 2 Good
- 3 Limited
- 4 Poor

# Suction Hoses

## Turnable Hose Connectors



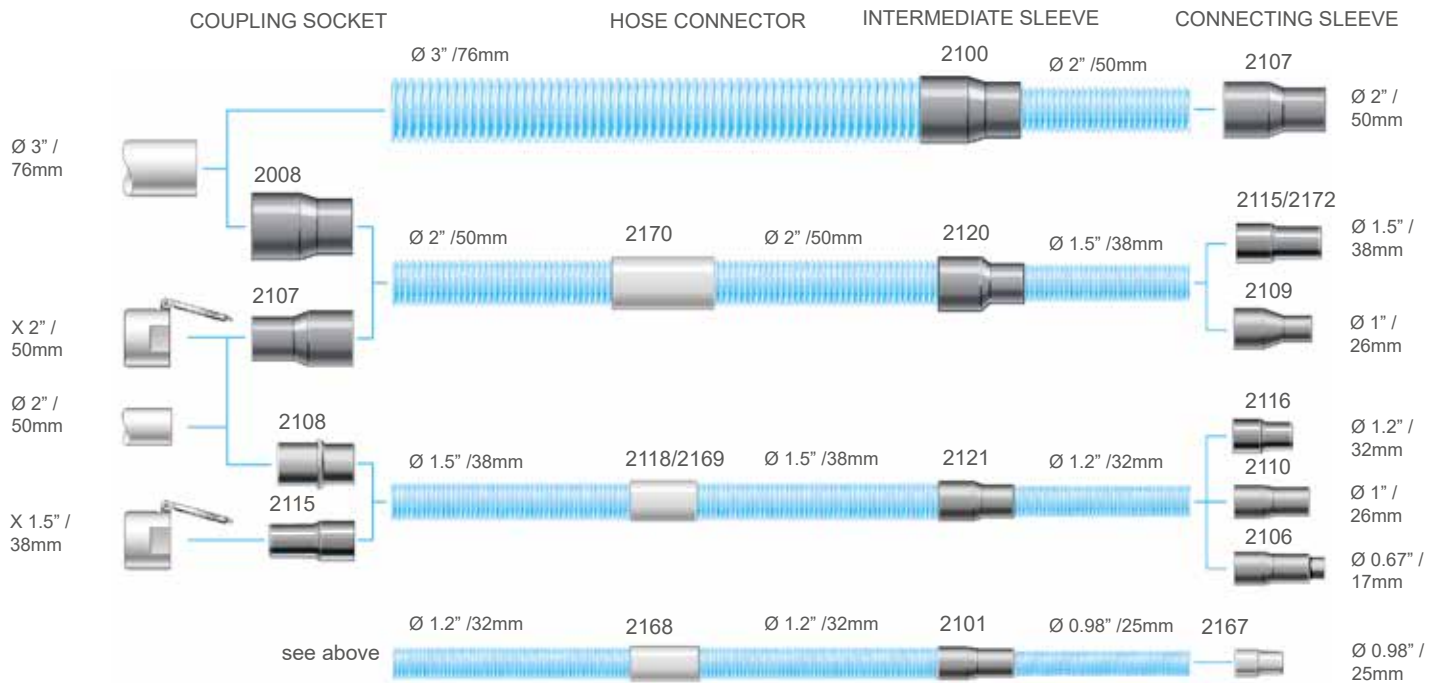
| Part No | Description                   | Dimensions              |
|---------|-------------------------------|-------------------------|
| 2114*   | Connecting sleeve, turnable   | Ø 1.5" / 1.5" / 38 / 38 |
| 2128*   | Coupling socket, turnable     | Ø 2" / 1.5" / 50 / 38   |
| 2129*   | Coupling socket, turnable     | Ø 2" / 2" / 50 / 50     |
| 2131*   | Intermediate sleeve, turnable | Ø 2" / 1.5" / 50 / 38   |
| 2132*   | Connecting sleeve, turnable   | Ø 1.2" / 1.5" / 32 / 38 |
| 2133*   | Coupling socket, turnable     | Ø 1.5" / 1.2" / 38 / 32 |
| 2171*   | Coupling socket, turnable     | Ø 1.2" / 1.2" / 32 / 32 |

\*To order an antistatic (ESD) version, add E to the end of part no.



# Suction Hoses

## Non-Turnable Hose Connectors



| Part No | Description                             | Part No | Description  | Part No | Description                            |
|---------|---|---------|--|---------|--|
| 2008*   | Coupling socket Ø 3"/2" /76/50          | 2116    | Connecting sleeve Ø 1.2"/1.2" /32/32   | 2167*   | Connecting sleeve Ø 0.98"/0.98" /25/25 |
| 2100*   | Intermediate sleeve Ø 3"/2" /76/50      | 2120*   | Intermediate sleeve Ø 2"/1.5" /50/38   | 2168*   | Hose connector Ø 1.2" /32              |
| 2101*   | Intermediate sleeve Ø 1.2"/0.98" /32/25 | 2121*   | Intermediate sleeve Ø 1.5"/1.2" /38/32   | 2169*   | Hose connector Ø 1.5" /38              |
| 2106*   | Connecting sleeve Ø 0.67"/1.2" /17/32   | 2156*   | Coupling Nipple 75/72.5. 2156 is used to connect the 76mm hose to flap valve, 76/76 part no 3237 | 2170*   | Hose connector Ø 2" /50                |
| 2107*   | Coupling socket Ø 2"/2" /50/50          |         |  |         |  |
| 2108*   | Coupling socket Ø 2"/1.5" /50/38        |         |  |         |  |
| 2109*   | Connecting sleeve Ø 1"/1.5" /26/38      |         |  |         |  |
| 2110*   | Connecting sleeve Ø 1"/1.2" /26/32      |         |  |         |  |
| 2115*   | Connecting sleeve Ø 1.5"/1.5" /38/38    |         |  |         |  |



\* To order an antistatic (ESD) version, add the letter E to the end of the part no.  
 \*\* The wire helix must be bared and left in contact with conductive material for static discharge.



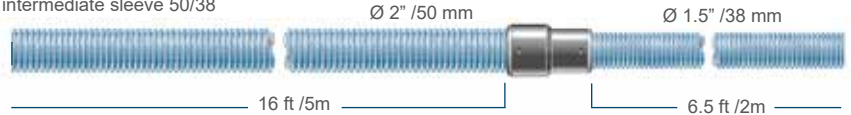
# Suction Hoses

## Hose Sets

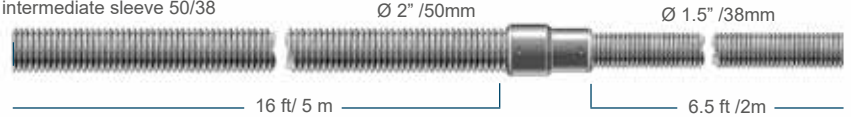
| Part No | Description  |
|---------|--|
| 2125    | Hose set Ø 50/38 L = 7 m<br>Ø 2"/1.5" L = 23 ft            |
| 2126    | Hose set Ø 50/38 L = 7 m<br>Ø 2"/1.5" L = 23 ft antistatic |
| 2006    | Hose set Ø 38 L = 2 m<br>Ø 1.5" L = 6.5 ft                 |
| 2015    | Hose set Ø 38/1.5" L = 2 m/6.5ft                           |
| 2105    | Hose set Ø 38/1.5" L = 5 m/16ft**                          |

\*\* Standard suction hose, turnable, non removable connector.  
(Replacement to standard hose kit)

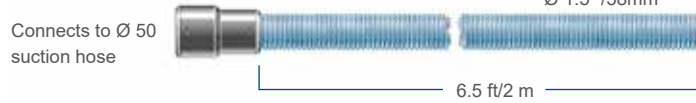
Standard suction hose, turnable  
intermediate sleeve 50/38



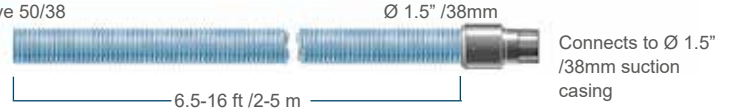
Antistatic suction hose, turnable  
intermediate sleeve 50/38



Standard suction hose, turnable  
intermediate sleeve 50/38



Standard suction hose, turnable  
intermediate sleeve 50/38



## Characteristics of Materials

| Description       | Dimension Ø inch/mm   | Part No | Colour | Material | Temp °F max/min/<br>Temp °C max/min | Antistatic | Abrasion<br>resistance | UV and zone<br>resistance | Resistance to<br>welding fume | Resistance to<br>solvent and oil |
|-------------------|-----------------------|---------|--------|----------|-------------------------------------|------------|------------------------|---------------------------|-------------------------------|----------------------------------|
| Coupling socket   | 3"/2"/76/50           | 2008*   | Black  | EPDM     | 284/-76/140/-60                     | Yes        | 2                      | 1                         | 2                             | 4                                |
|                   | 2"/2"/50/50           | 2107*   | Black  | EPDM     | 284/-76/140/-60                     | Yes        | 2                      | 1                         | 2                             | 4                                |
|                   | 2"/1.5"/50/38         | 2108*   | Black  | EPDM     | 284/-76/140/-60                     | Yes        | 2                      | 1                         | 2                             | 4                                |
|                   | 3"/2"/76/50 (PU)**    | 2161*   | Black  | EPDM     | 284/-76/140/-60                     | Yes        | 2                      | 1                         | 2                             | 4                                |
| Coupling socket   | 3"/2"/76/50           | 2162*   | Blue   | NBR      | 248/-76/120/-60                     | Yes        | 2                      | 3                         | 3                             | 2                                |
| Coupling socket   | 2"/2"/50/50           | 2129*   | Black  | PA12     | 284/-4/140/-20                      | Yes        | 1                      | 2                         | 3                             | 1                                |
|                   | 2"/2"/50/50 (PU)**    | 2158*   | Black  | PA12     | 284/-4/140/-20                      | Yes        | 1                      | 2                         | 3                             | 1                                |
|                   | 2"/1.5"/50/38 (PU)**  | 2157*   | Black  | PA12     | 284/-4/140/-20                      | Yes        | 1                      | 2                         | 3                             | 1                                |
|                   | 2"/1.5"/50/38         | 2128*   | Black  | PA12     | 284/-4/140/-20                      | Yes        | 1                      | 2                         | 3                             | 1                                |
|                   | 1.5"/1.25"/38/32      | 2133*   | Black  | PA12     | 284/-4/140/-20                      | Yes        | 1                      | 2                         | 3                             | 1                                |
|                   | 1.25"/1.25"/32/32     | 2171*   | Black  | PA12     | 284/-4/140/-20                      | Yes        | 1                      | 2                         | 3                             | 1                                |
|                   | 1.25"/1.5"/32/38      | 2132*   | Black  | PA12     | 284/-4/140/-20                      | Yes        | 1                      | 2                         | 3                             | 1                                |
|                   | 1.5"/1.5/38/38 (PU)** | 2159*   | Black  | PA12     | 284/-4/140/-20                      | Yes        | 1                      | 2                         | 3                             | 1                                |
| Connecting sleeve | 1.5"/1.5/38/38        | 2114*   | Black  | PA12     | 284/-4/140/-20                      | Yes        | 1                      | 2                         | 3                             | 1                                |
|                   | 2"/2"/50/50           | 2129*   | Black  | PA12     | 284/-4/140/-20                      | Yes        | 1                      | 2                         | 3                             | 1                                |
|                   | 1"/1"/25/25           | 2167*   | Black  | PA12     | 284/-4/140/-20                      | Yes        | 1                      | 2                         | 3                             | 1                                |
|                   | 1.5"/1.5/38/38        | 2115*   | Black  | PA12     | 284/-4/140/-20                      | Yes        | 1                      | 2                         | 3                             | 1                                |
|                   | 1"/1.5"/26/38         | 2109*   | Black  | EPDM     | 284/-76/140/-60                     | Yes        | 2                      | 1                         | 2                             | 4                                |
|                   | 1"/1.25"/26/32        | 2110*   | Black  | EPDM     | 284/-76/140/-60                     | Yes        | 2                      | 1                         | 2                             | 4                                |
| Connecting sleeve | .7"/1.25"/17/32       | 2106*   | Black  | EPDM     | 284/-76/140/-60                     | Yes        | 2                      | 1                         | 2                             | 4                                |
|                   | 1.25"/1.25"/32/32     | 2116    | Grey   | PE       | 45/-45                              | No         | 1                      | 2                         | 3                             | 1                                |
|                   | 1"/1"/25/25           | 2117    | Grey   | PE       | 45/-45                              | No         | 1                      | 2                         | 3                             | 1                                |
| Inter, sleeves    | 2"/1.5"/50/38         | 2131*   | Black  | PA12     | 284/-4/140/-20                      | Yes        | 1                      | 2                         | 3                             | 1                                |
|                   | 2"/1.5"/50/38 (PU)**  | 2160*   | Black  | PA12     | 284/-4/140/-20                      | Yes        | 1                      | 2                         | 3                             | 1                                |
| Inter, sleeves    | 3"/2"/76/50           | 2100*   | Black  | EPDM     | 284/-76/140/-60                     | Yes        | 2                      | 1                         | 2                             | 4                                |
|                   | 2"/1.5"/50/38         | 2120*   | Black  | EPDM     | 284/-76/140/-60                     | Yes        | 2                      | 1                         | 2                             | 4                                |
|                   | 1.5"/1.25"/38/32      | 2121*   | Black  | EPDM     | 284/-76/140/-60                     | Yes        | 2                      | 1                         | 2                             | 4                                |
|                   | 1.25"/1"/32/25        | 2101*   | Black  | EPDM     | 284/-76/140/-60                     | Yes        | 2                      | 1                         | 2                             | 4                                |
|                   | 2"/50                 | 2403    | Grey   | PE       | 45/-45                              | No         | 2                      | 2                         | 3                             | 3                                |
| Hose connector    | 1.5"/38               | 2118    | Grey   | PE       | 45/-45                              | No         | 2                      | 2                         | 3                             | 3                                |
|                   | 1.25"/32              | 2119    | Grey   | PE       | 45/-45                              | No         | 2                      | 2                         | 3                             | 3                                |
|                   | 2"/50                 | 2170*   | Black  | PA12     | 284/-4/140/-20                      | Yes        | 1                      | 2                         | 3                             | 1                                |
| Hose connector    | 1.5"/38               | 2169*   | Black  | PA12     | 284/-4/140/-20                      | Yes        | 1                      | 2                         | 3                             | 1                                |
|                   | 1.25"/32              | 2168*   | Black  | PA12     | 284/-4/140/-20                      | Yes        | 1                      | 2                         | 3                             | 1                                |

\* Antistatic is defined as having a conductivity of < 10<sup>6</sup> Ω

To order an antistatic ESD version, add the letter E to the end of the part no.

\*\* The wire helix must be bared and left in contact with conductive material

### Resistance Scale

- 1 Excellent
- 2 Good
- 3 Limited
- 4 Poor

# Suction Casings



## Finding the right suction casing

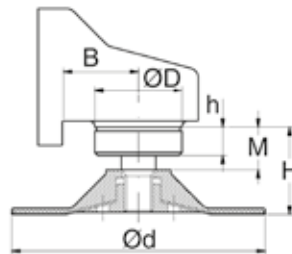
| Machine |   | Make |   |   | Type |   |
|---------|---|------|---|---|------|---|
| D       | d | H    | h | A | B    | M |

### Legend

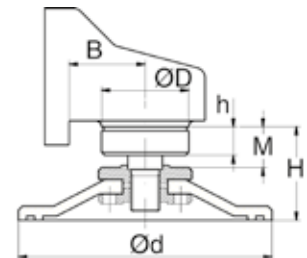
- F Fibre disc
- D Diamond cup grinding disc
- N Depressed centre disc
- K Abrasive disc, diamond disc
- S Abrasive cup stone

If you cannot find the suction casing you are looking for, contact your sales representative for pricing information regarding a product tailored to your specific needs.

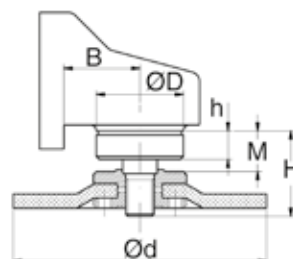
**F**  
Fibre Disc



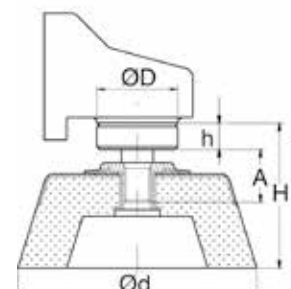
**D**  
Diamond Cup Grinding Disc



**N, K**  
Depressed Centre Disc,  
Abrasive Disc, Diamond Disc



**S**  
Abrasive Cup Stone





# Suction Casings Suction Casing Kit for Fibre Discs (F)

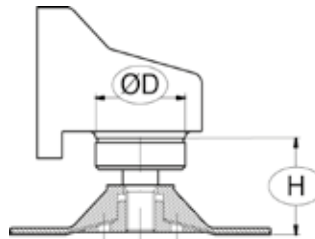
1

Measure the diameter of the disc.



2

Measure the diameter of the mounting collar on the machine - ØD and the height of the machine - H.



3

Check out our range of Suction Cases to fit your need. Mount the Suction Casing and ready to use!



## Technical data

| DISC DIAMETER    | Ø D [mm/in]    | H [mm/in]      | Connection, Ø [mm/in] | Part No |
|------------------|----------------|----------------|-----------------------|---------|
| 1½–3" (38–75 mm) | 27 /1.1        | *              | 32 /1.25              | 6833*   |
| 4" (100 mm)      | 40–49 /1.6–1.9 | 39–44 /1.5–1.7 | 32 /1.25              | 6670    |
| 4½" (115 mm)     | 40–49 /1.6–1.9 | 39–48 /1.5–1.9 | 32 /1.25              | 6671    |
| 5" (125 mm)      | 40–49 /1.6–1.9 | 39–48 /1.5–1.9 | 32 /1.25              | 6672    |
| 5" (125 mm)      | 50/2           | 38–61 /1.5–2.1 | 32 /1.25              | 6673    |
| 7" (175 mm)      | 54–61 /2.1–2.4 | 50–59 /2–2.3   | 38 /1.5               | 6674    |

\*\* Some Hitachi machines have a Ø40 mm /1.6" conical neck. With these, it is necessary to buy an aluminium ring (Part No. 6270). When fitted on the machine, this aluminium ring enlarges the ØD of the machine to 50 mm /1.9" – therefore choose the 5" N, K suction casing kit – Part No. 6678.



## Accessories and Consumables

# Suction Casings Suction Casing Kit for Diamond Cup Grinding Discs (D)

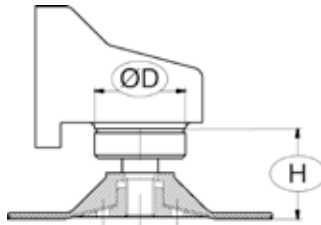
1

Measure the diameter of the disc.



2

Measure the diameter of the mounting collar on the machine - ØD and the height of the machine - H.



3

Check out our range of Suction Cases to fit your need. Mount the Suction Casing and ready to use!



### Technical data

| DISC DIAMETER | Ø D [mm/in]                     | H [mm/in]       | Connection, Ø [mm/in] | Part No |
|---------------|---------------------------------|-----------------|-----------------------|---------|
| 4½" (115 mm)  | 40-49 / 1.6-1.9                 | 49-54 / 1.9-2.1 | 32 / 1.25             | 6681    |
| 5" (125 mm)   | 40-49 / 1.6-1.9                 | 49-70 / 1.9-2.8 | 32 / 1.25             | 6682    |
| 5" (125 mm)   | 50/2                            | 38-61 / 1.5-2.4 | 32 / 1.25             | 6673    |
| 7" (175 mm)   | 54-61 / 2.1-2.4                 | 63-72 / 2.5-2.8 | 38 / 1.5              | 6683    |
| 7" (175 mm)   | 62-65 & 74-77 / 2.4-2.6 & 2.9-3 | 63-86 / 2.5-3.4 | 38 / 1.5              | 6684    |



## Accessories and Consumables

# Suction Casings

## Suction Casing Kit for Depressed Centre Discs, Abrasive Discs and Diamond Discs (N, K)

1

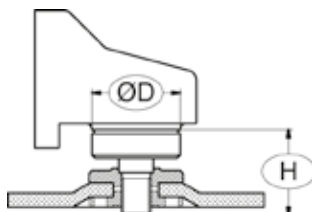
Measure the diameter of the disc.



Note: Max. thickness of disc = 18 mm.

2

Measure the diameter of the mounting collar on the machine  $\varnothing D$  and the height of the machine - H.



3

Check out our range of Suction Cases to fit your need. Mount the Suction Casing and ready to use!



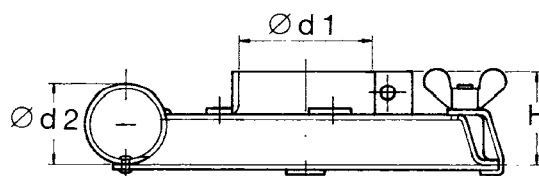
### Technical data

| DISC DIAMETER             | $\varnothing D$ [mm/in] | H [mm/in]      | Connection, $\varnothing$ [mm/in] | Part No |
|---------------------------|-------------------------|----------------|-----------------------------------|---------|
| 4 ½" (115 mm)             | 40–49 /1.6–1.9          | 31–46 /1.2–1.8 | 32 /1.25                          | 6676    |
| 5" (125 mm)               | 40–45 /1.6–1.8          | 31–46 /1.2–1.8 | 32 /1.25                          | 6677**  |
| 5" (125 mm)               | 46–53 /1.8–2.1          | 31–46 /1.2–1.8 | 32 /1.25                          | 6678    |
| 9"*                       | 112 /4.4                | 37 /1.5        | 38 /1.5                           | 6221*   |
| 9"                        | 68 /2.7                 | 51 /2          | 38 /1.5                           | 6202*   |
| 9"                        | 74 /2.9                 | 54 /2.1        | 38 /1.5                           | 6302*   |
| 9"                        | 74 /2.9                 | 37 /1.5        | 38 /1.5                           | 6349*   |
| 9"                        | 50 /2                   | 47 /1.9        | 38 /1.5                           | 6500*   |
| 9"                        | 62 /2.4                 | 54 /2.1        | 38 /1.5                           | 6416*   |
| 9"                        | 62 /2.4                 | 50 /2          | 38 /1.5                           | 6438*   |
| 9"                        | 62 /2.4                 | 48 /1.9        | 38 /1.5                           | 6555*   |
| 9"                        | 65 /2.6                 | 40 /1.6        | 38 /1.5                           | 6842*   |
| 9"                        | 64 /2.5                 | 52 /2          | 38 /1.5                           | 6427*   |
| 9"                        | 58 /2.3                 | 54 /2.1        | 38 /1.5                           | 6537*   |
| 9" Georges Renault KL 365 |                         | 59 /2.3        | 38 /1.5                           | 6388*   |

\* With the clamping rings welded on the suction casings.

\*\* Some Hitachi machines have a  $\varnothing 40$  mm conical neck. With these, it is necessary to buy an aluminium ring (part no 6270). When fitted on the machine, this aluminium ring enlarges the  $\varnothing D$  of the machine to 50 mm – therefore choose the 5" N, K suction casing kit – Part No 6678.

### Connection $\varnothing$



## Accessories and Consumables

# Suction Casings

## Suction Casing for Hammer Drills, Chisels and Breakers



### Suction casings B, H, M, L

| No | Part No         | Connection tool Ø [mm/in]      | Hose connection Ø [mm/in] | Height [mm/in] |
|----|-----------------|--------------------------------|---------------------------|----------------|
| 1  | 6621            | 48 /1.89                       | 38 /1.5                   | 158 /6.22      |
| 2  | 6622            | 43 /1.69                       | 38 /1.5                   | 158 /6.22      |
| 3  | 6077            | 32 /1.26                       | 32 /1.26                  | 112 /4.4       |
| 4  | 6078            | 61 /2.4                        | 38 /1.5                   | 178 /7         |
| 5  | 6001 (handpipe) | -                              | 50 /2                     | 100 /3.9       |
| 6  | 6130            | Bellow for 6078, 6621 and 6622 |                           |                |

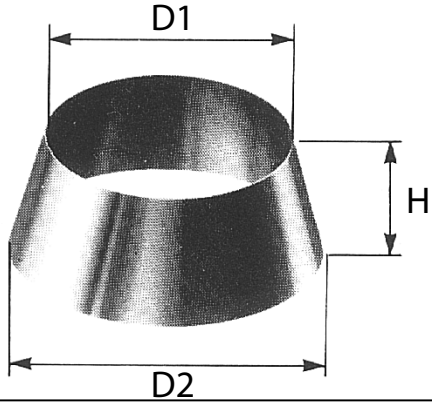
Part No 6622 and 6077 are suitable for small chisel hammers.

### Model-specific suction casings

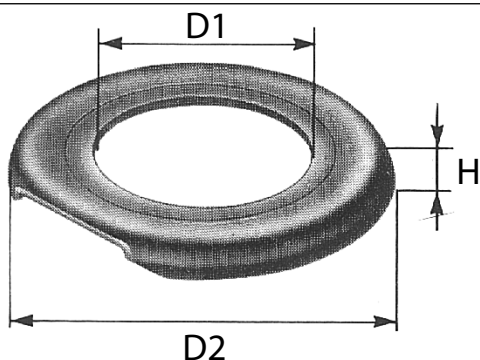
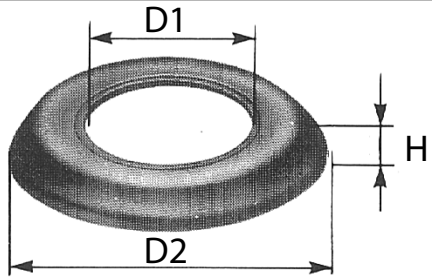
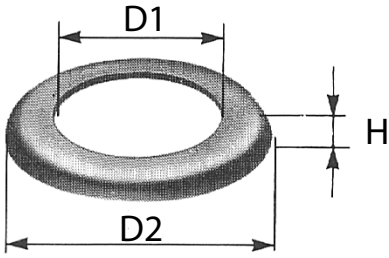
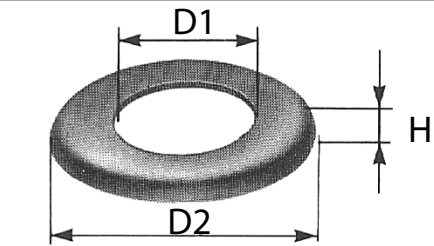
| Part No | Model                     | Hose connection Ø [mm/in] |
|---------|---------------------------|---------------------------|
| 6229    | Atlas Copco RRD 37/RRD 57 | 38 /1.5                   |
| 6152    | Atlas Copco BBD 11/RRC 73 | 38 /1.5                   |

## Accessories and Consumables

# Suction Casings Spare Parts for Suction Casings



| Description                                    |         | Dimension  |            |           | Part No |
|--|---------|------------|------------|-----------|---------|
|  |         | D1 [mm/in] | D2 [mm/in] | H [mm/in] |         |
| Plastic ring for saucer grinder                | 5 S     | 121 /4.8   | 139 /5.5   | 50 /2     | 6003    |
|  | 6 S     | 147 /5.8   | 164 /6.5   | 50 /2     | 6004    |
| Rubber collar for fibre disc (F)               | 1 ½ F   | 39 /1.5    | 59 /2.3    | 23 /0.9   | 6314    |
|  | 2 F     | 39 /1.5    | 69 /2.7    | 23 /0.9   | 6313    |
|  | 3 F     | 39 /1.5    | 95 /3.7    | 25 /1     | 6312    |
|  | 4 F     | 72 /2.8    | 117 /4.6   | 13 /0.5   | 6182    |
|  | 4 ½ F   | 72 /2.8    | 135 /5.3   | 13 /0.5   | 6181    |
|  | 4 ½ F   | 72 /2.8    | 135 /5.3   | 23 /0.9   | 618100  |
| 5 F  | 72 /2.8 | 145 /5.7   | 13 /0.5    | 6195      |         |
| Rubber collar for fibre disc (F)               | 5 F     | 96 /3.8    | 150 /5.9   | 15 /0.6   | 6006    |
| Rubber collar for oscillating. sanding machine | 5 O     | 72 /2.8    | 145 /5.7   | 38 /1.5   | 6212    |
|  | 6 O     | 96 /3.8    | 170 /6.7   | 28 /1.1   | 6180    |
| Rubber collar for fibre disc (F)               | 7 F     | 112 /4.4   | 196 /7.7   | 19 /7     | 6002    |
|  | 7 F     | 112 /4.4   | 196 /7.7   | 35 /1.4   | 6034    |
|  | 8 F     | 112 /4.4   | 221 /8.7   | 41 /1.6   | 6211    |
|  | 9 F     | 113 /4.5   | 250 /10    | 32 /1.25  | 6039    |



# Select the right bag for your machine.

46145



42702



43619



42384



42111



42951



42285



42190



42291



4714



4314



44077 <sup>o</sup> 25 m /82 ft

432177 <sup>o</sup> 23 m /75 ft

45379 <sup>o</sup> XXX-Strong 20 m /65 ft

44763 <sup>o</sup> 12 m /39 ft



# Plastic Bags

## Accessories and Consumables

| MODEL                           | Standard Bag [Prod No]                            | Antistatic/ESD     | Volume [l/gal] | Size Standard bag WxH [mm/in]                 |
|---------------------------------|---|--------------------|----------------|---|
| DC 1800                         | 42291 <sup>A</sup>                                | 42951 <sup>D</sup> | 30/7.9         | 350x200x550 / 13.8x7.9x21.7                   |
| DC 1800 XL                      | 42285 <sup>D</sup>                                | 42384 <sup>D</sup> | 60/15.5        | 360x700 / 14x27.5                             |
| DC 2900 c                       | 42702 <sup>A</sup>                                | -                  | 31/7.9         | 280x180x800 / 11x7.1x31.5x34.2 + 23 m / 75 ft |
| DC 2900 L                       | 44763 <sup>B</sup> + 432177 <sup>B</sup> Longopac | -                  | 20/5           | 12 m / 39 ft + 23 m / 75 ft                   |
| DC 1800 H Asbestos              | 42285 <sup>D</sup>                                | 42384 <sup>D</sup> | 20/5           | 360x700 / 14x27.5                             |
| DC 2800 H Asbestos              | 42285 <sup>D</sup>                                | 42384 <sup>D</sup> | 70/15.4        | 360x700 / 14x27.5                             |
| DC Tromb 400 c                  | 43619 <sup>A</sup>                                | 42384 <sup>D</sup> | 33/7.3         | 500x850 / 19.7x33.5                           |
| DC Tromb 400 a                  | 42285 <sup>G</sup>                                | 42384 <sup>D</sup> | 70/15.4        | 360x700 / 14x27.5                             |
| DC Tromb 400 L                  | 432177 <sup>B</sup> Longopac                      | -                  | -              | 23 m / 75 ft                                  |
| DC Tromb Turbo Direct c         | 43619 <sup>A</sup>                                | 42384 <sup>D</sup> | 33/7.3         | 280x170x870 / 11x6.7x34.3                     |
| DC Tromb Turbo Direct L         | 432177 <sup>B</sup> Longopac                      | -                  | -              | 23 m / 75 ft                                  |
| DC Tromb Turbo VFD c            | 43619 <sup>A</sup>                                | 42384 <sup>D</sup> | 33/7.3         | 280x170x870 / 11x6.7x34.3                     |
| DC Tromb Turbo VFD L            | 432177 <sup>B</sup> Longopac                      | -                  | -              | 23 m / 75 ft                                  |
| DC Tromb Twin aa                | 42285 <sup>G</sup>                                | 42384 <sup>D</sup> | 70/15.4        | 360x700 / 14x27.5                             |
| DC Tromb Twin cc                | 43619 <sup>A</sup>                                | 42384 <sup>D</sup> | 33/7.3         | 280x170x870 / 11x6.7x34.3                     |
| DC Tromb Twin cL                | 43619 <sup>A</sup> + 432177 <sup>B</sup> Longopac | 42384 <sup>D</sup> | 33/7.3         | 280x170x870 / 11x6.7x34.3 + 23 m / 75 ft      |
| DC Tromb Twin LL                | 432177 <sup>B</sup> Longopac                      | -                  | -              | 23 m / 75 ft                                  |
| DC Tromb 400 H Asbestos         | 42285 <sup>G</sup>                                | 42384 <sup>D</sup> | 70/15.4        | 360x700 / 14x27.5                             |
| DC 3800 Wood Shavings Extractor | 4714 <sup>C</sup>                                 | -                  | 90/23          | 700x1100 / 27.5x43.3                          |
| DC 4000 PCB                     | 42285 <sup>D</sup>                                | 42384 <sup>D</sup> | 70/15.4        | 360x700 / 14x27.5                             |
| DC 5900 c                       | 46145 <sup>A</sup>                                | -                  | 60/15.9        | 420x220x1000 / 16.5x8.7x39.4                  |
| DC 5900 L                       | 44077 <sup>D</sup> Longopac + 44248 <sup>E</sup>  | -                  | -              | 25 m / 82 ft                                  |
| DC 5900 H Asbestos              | 46141 <sup>D</sup>                                | -                  | 75/19.8        | 700x1100 / 27.5x43.3                          |
| DC Storm c                      | 46145 <sup>A</sup>                                | -                  | 60/15.5        | 640x1000 / 25.2x39.4                          |
| DC Storm L                      | 44077 <sup>D</sup> Longopac                       | -                  | -              | 25 m / 82 ft                                  |
| DC Storm LPG                    | 44077 <sup>D</sup> Longopac                       | -                  | -              | 25 m / 82 ft                                  |
| S 11000                         | 4714 <sup>C</sup>                                 | 42111 <sup>C</sup> | 100/26.4       | 700x1100 / 27.5x43.3                          |
| S 11000                         | 44078 <sup>D</sup> Holder                         | 42111 <sup>C</sup> | 90/23          | 700x1100 / 27.5x43.3                          |
| S 2100/32000/34000/34000X       | 4714 <sup>C</sup>                                 | 42111 <sup>C</sup> | 100/26.4       | 700x1100 / 27.5x43.3                          |
| DC 50W /DC 75W                  | 42190 <sup>D</sup>                                | -                  | -              | -   |
| DCF Storm c                     | 46145 <sup>A</sup>                                | -                  | 60/15.5        | 640x1000 / 25.2x39.4                          |
| DCF Storm L                     | 44077 <sup>D</sup> Longopac                       | -                  | -              | 25 m / 82 ft                                  |
| DCF 2800 c                      | 42702 <sup>A</sup>                                | -                  | 20/5           | 440x550 / 17x 21.7                            |
| DCF Tromb c / DCF Tromb a       | 43619 <sup>A</sup> / 42285 <sup>G</sup>           | -                  | 33/7.3         | 280x170x870 / 11x6.7x34.3                     |
| DCF Tromb L                     | 432177 <sup>B</sup> Longopac                      | -                  | -              | 23 m / 75 ft                                  |
| DCF Mobile                      | 4714 <sup>C</sup>                                 | 42111 <sup>C</sup> | 100/26.4       | 700x1100 / 27.5x43.3                          |
| F 20000                         | 4714 <sup>C</sup>                                 | 42111 <sup>C</sup> | 100/26.4       | 700x1100 / 27.5x43.3                          |
| F 30000                         | 4714 <sup>C</sup>                                 | 42111 <sup>C</sup> | 100/26.4       | 700x1100 / 27.5x43.3                          |
| DC 1800/2800 EX                 | -   | 42951 <sup>F</sup> | 40/8.8         | 360x400 / 14x15.7                             |
| DC Tromb Turbo EX               | 42285 <sup>G</sup>                                | 42111 <sup>C</sup> | 175/38.5       | 450x1100 / 17.7x43.3                          |
| DC 5800 Turbo EX                | -   | 42111 <sup>C</sup> | 175/38.5       | 450x1100 / 17.7x43.3                          |
| DC 1800 TR EX                   | -   | 42384 <sup>F</sup> | 70/15.4        | 360x700 / 14x27.5                             |
| DC 2800 TR EX                   | 42285 <sup>D</sup>                                | 42384 <sup>D</sup> | 70/15.4        | 360x700 / 14x27.5                             |
| DC 3800 Turbo TR EX             | -   | 42384 <sup>F</sup> | 70/15.4        | 360x700 / 14x27.5                             |
| DC 5900 Turbo TR                | 46145 <sup>A</sup>                                | -                  | 60/15.5        | 640x1000 / 25.2x39.4                          |

**A** Set of 10 bags  
**B** Set of 4 bags  
**C** Set of 50 bags

**D** Individual bags  
**E** Adaption Kit for Longopac  
**F** Set of 25 bags

**G** Set of 5 bags



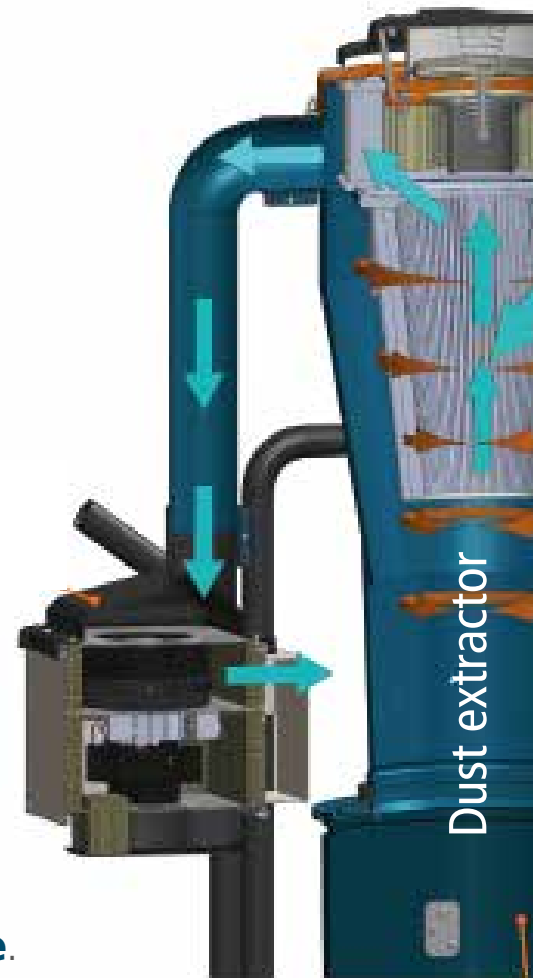
**Bag strap (Part No)**  
**4313, 1 m 4613, 1.5 m**

# Choose the Right Filter

**Pleated design** increases the filtering surface. For filtering to be effective without affecting user performance, the air velocity through the filter must be maintained but without overloading the volume capacity of the filter media. Suitable filter loadings vary with the material being extracted. Suitable filter loading, measured in  $\text{m}^3/\text{hr}$  per  $\text{m}^2$  of filter area, for concrete dust is for example, a maximum of  $120\text{m}^3/\text{hr}$  per  $\text{m}^2$ , while welding fume is only  $60\text{m}^3/\text{hr}$  per  $\text{m}^2$  as it exerts a higher filter loading or simply put, it will block the filters more quickly. This is always considered in Dustcontrol's design criteria.

Our dust extractor separates dust in three stages:

1. Large particles are separated dynamically in the **Cyclone**.
2. Filtration then takes place in the pleated **Fine Filter**.
3. Followed by a pleated **Microfilter** HEPA H13.



**The Fine Filter.** This filter is designed to capture the small particles that are not captured in the pre-separator or cyclone.



#### **Cellulose Fine Filter**

A high-quality, standard filter with high filtration efficiency. Epoxy-treated for improved resistance to humidity and other elements. It is pleated around a support cylinder.

#### **Polyester Fine Filter**

A high-quality filter resistant to most substances. Perfect for use in wet environments such as mechanical workshops in which cutting fluids etc. is used. Slightly smoother surface than the cellulose filter, enabling more efficient cleaning and a longer service life. The filter is washable.

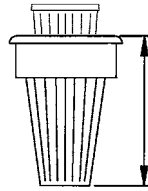
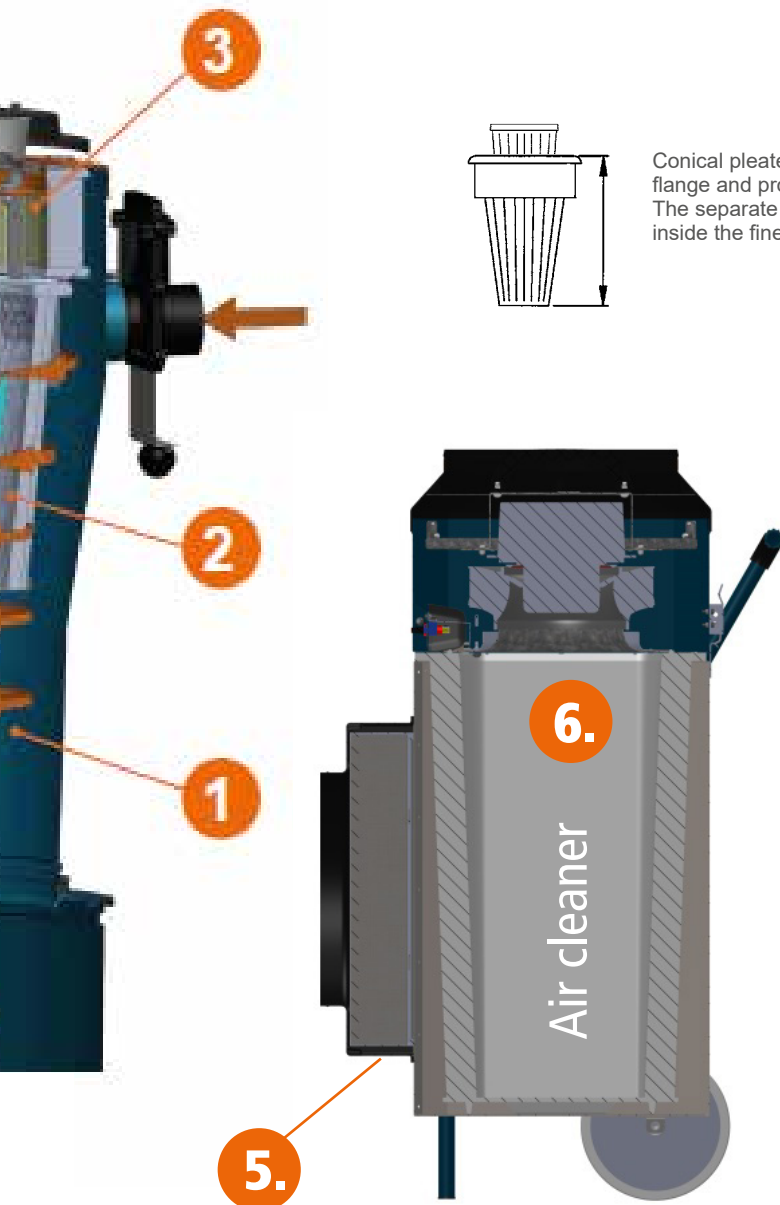
#### **PTFE Fine Filter**

The polyester filter is treated with PTFE, meaning that the filter coating can easily be separated from the surface. This type of filter is suitable for use in applications such as floor grinding. The filter is washable.

#### **A Pre-Filter** is a basic filter used with air

cleaners in order to capture large particles and relieve the loading on the HEPA filter. The pre-filter is designed as a pleated filter in cassette or textile form. It is disposable. Each Pre-Filter filter is individually tested for level G4 compliance.





Conical pleated filter with sealing flange and protective jacket. The separate HEPA filter is fitted inside the fine filter.



Air cleaner

Our Air cleaners separate dust in two stages:

4. Large particles are separated by the **Carpet Pre-filter**, or a
5. **Pre-filter cartridge**,
6. followed by a pleated **HEPA H13 Microfilter**

**Microfilter, HEPA filter, Absolute Filter** goes by many names, and has a filtration efficiency of 99.995%.



### A HEPA Filter

The HEPA filter is assembled from a very fine-meshed fibreglass textile with extremely deep-acting properties. One or two layers of e.g. cellulose may be added to improve rigidity.

Each HEPA filter is individually tested for level H13 compliance. The test report can be obtained on request.



Dustcontrol's HEPA filters comply with the requirements for H-class dust extractors. The HEPA filter should be replaced when it becomes saturated.

All Dustcontrol's dust extractors and air cleaners, have a separate HEPA H13 filter installed after the fine filter or pre-filter. The filter systems in all Dustcontrol dust extractors are built to comply with the the stringent IEC machine classification H.



# Filters

DC 1800/2900, DC 1800/2800 EX, DC 1800/2800 TR EX, DC 1800/2800 Asbestos

| Part No  | Type of filter / Machine  | Construction                    | Material                 | Area [m <sup>2</sup> /ft <sup>2</sup> ] | Classification           | Max temp     |
|----------|---|---------------------------------|--------------------------|---|--------------------------|--------------|
| 42029    | Fine filter,<br>DC 1800/2900cL  | Pleated around support cylinder | Cellulose, epoxy-treated | 1.5 /16.2                               | IEC EN 60335-2-69 Part 1 | 176°F /80°C  |
| 42029ST  | Fine filter x 48  | Pleated around support cylinder | Cellulose                | 1.5 /16.2                               | IEC EN 60335-2-69 Part 1 | 176°F /80°C  |
| 42028    | Fine filter,<br>DC 1800/2900a,<br>DC 1800/2800 Asbestos   | Pleated                         | Polyester                | 1.5 /16.2                               | IEC EN 60335-2-69 Part 1 | 266°F /130°C |
| 42028-01 | Fine filter,<br>DC 1800/2900, 1800/2800 TR EX<br>DC 1800/2800 EX                                  | Pleated                         | Polyester, antistatic    | 1.5 /16.2                               | IEC EN 60335-2-69 Part 1 | 266°F /130°C |
| 42028-02 | Finfilter, PTFE<br>DC 1800/2900   | Pleated                         | Polyester, PTFE          | 1.5 /16.2                               | IEC EN 60335-2-69 Del1   | 100 °C       |
| 42027    | HEPA filter,<br>DC 1800/2900,<br>DC 1800/2800 EX,<br>DC 1800/2800 TR EX,<br>DC 1800/2800 Asbestos | Pleated                         | Cellulose, fibreglass    | 0.85 /9.2                               | HEPA H13 EN 1822-1       | 176°F /80°C  |

## DC Tromb, DC Tromb Twin, DC Tromb Turbo, DC Tromb Turbo EX, DC Tromb Asbestos

| Part No | Type of filter / Machine                               | Construction                    | Material                 | Area [m <sup>2</sup> /ft <sup>2</sup> ] | Classification           | Max temp     |
|---------|--|---------------------------------|--------------------------|---|--------------------------|--------------|
| 44017   | Fine filter, DC Tromb Twin/Turbo/<br>Turbo EX/Asbestos | Pleated around support cylinder | Polyester                | 1.85 /20                                | IEC EN 60335-2-69 Part 1 | 176°F/80°C   |
| 44017-1 | Fine filter, DC Tromb Turbo EX                         | See above                       | Polyester, antistatic    | 1.85 /20                                | IEC EN 60335-2-69 Part 1 | 176°F/80°C   |
| 44043   | Fine filter  | Pleated around support cylinder | Cellulose, epoxy-treated | 1.85 /20                                | IEC EN 60335-2-69 Part 1 | 176°F/80°C   |
| 44213   | Fine filter, PTFE                                      | Pleated around support cylinder | Polyester, PTFE          | 2.5 /27                                 | IEC EN 60335-2-69 Part 1 | 266°F /130°C |
| 44016   | HEPA filter, DC Tromb/Twin/<br>Turbo/Asbestos          | Pleated                         | Cellulose, fibreglass    | 2.2 /23.7                               | HEPA H13 EN 1822-1       | 176°F/80°C   |
| 44016-1 | HEPA filter, DC Tromb 600                              | Pleated                         | Cellulose, fibreglass    | 3.3 /35.6                               | HEPA H13 EN 1822-1       | 176°F/80°C   |
| 44017-2 | Fine filter, DC Tromb 600                              | Pleated around support cylinder | Polyester                | 2.8 /30.2                               | IEC EN 60335-2-69 Part 1 | 176°F/80°C   |

## DC 3800 I, DC 3800 Wood Shavings Extractor, DC 3800 TR EX

| Part No | Type of filter / Machine  | Construction | Material              | Area [m <sup>2</sup> /ft <sup>2</sup> ] | Classification           | Max temp     |
|---------|---|--------------|-----------------------|---|--------------------------|--------------|
| 42025   | Fine filter, DC 3800 I, DC 3800<br>Wood Shavings Extractor,       | Pleated      | Polyester             | 1.8 /19.4                               | IEC EN 60335-2-69 Part 1 | 266°F /130°C |
| 42025ST | Fine filter x 24  | Pleated      | Polyester             | 1.8 /19.4                               | IEC EN 60335-2-69 Part 1 | 266°F /130°C |
| 4202501 | Fine filter, DC 3800 TR EX  | Pleated      | Polyester, antistatic | 1.5 /16.1                               | IEC EN 60335-2-69 Part 1 | 176°F /80°C  |
| 42024   | HEPA filter, DC 3800 Wood Shav-<br>ings Extractor, DC 3800 TR EX, | Pleated      | Cellulose, fibreglass | 1.5 /16.1                               | HEPA H13 EN 1822-1       | 266°F /130°C |

## DC 5800 Turbo Ex, DC 5900, DC 5900 Asbestos, DC 5900 TR, DC Storm, DC Storm LPG

| Part No | Type of filter / Machine  | Construction                    | Material              | Area [m <sup>2</sup> /ft <sup>2</sup> ] | Classification           | Max temp     |
|---------|---|---------------------------------|-----------------------|---|--------------------------|--------------|
| 429203  | Fine filter, PTFE, DC 5900  | Pleated around support cylinder | Polyester, PTFE       | 5.0 /53.8                               | IEC EN 60335-2-69 Part 1 | 266°F /130°C |
| 44081   | Fine filter, PTFE,<br>DC Storm 600/700L   | Pleated around support cylinder | Polyester, PTFE       | 5.0 /53.8                               | IEC EN 60335-2-69 Part 1 | 266°F /130°C |
| 429204  | Fine filter, DC 5900c 9.2 kW S,<br>DC 5900 Asbestos 4 kW,<br>DC 5900 TR   | Pleated around support cylinder | Polyester             | 5.0 /53.8                               | IEC EN 60335-2-69 Part 1 | 266°F /130°C |
| 44212   | Fine filter, DC Storm 500acL,<br>DC Storm 600/700ac   | Pleated around support cylinder | Polyester             | 5.0 /53.8                               | IEC EN 60335-2-69 Part 1 | 266°F /130°C |
| 4292    | Fine filter, DC 5900c 9.2 kW P,<br>DC 5900c Asbestos 9.2 kW P   | Pleated around support cylinder | Polyester             | 8.4 /90.4                               | IEC EN 60335-2-69 Part 1 | 266°F /130°C |
| 429206  | Fine filter, DC 5800 Turbo Ex   | Pleated around support cylinder | Polyester             | 8.4 /90.4                               | IEC EN 60335-2-69 Part 1 | 266°F /130°C |
| 42869   | HEPA filter,<br>DC 5800 Turbo Ex, DC 5900 4/9.2 kW S,<br>DC 5900 Asbestos 4 kW (installed<br>under top cover),<br>DC 5900 TR, DC Storm 500acL | Pleated around support cylinder | Cellulose, fibreglass | 2.7 /29                                 | HEPA H13 EN 1822-1       | 176°F /80°C  |
| 42807   | HEPA filter, DC Storm 600L,<br>DC 5900c 9.2 kW S/P, DC Storm LPG,<br>DC 5900c Asbestos 9.2 kW P   | Pleated around support cylinder | Cellulose, fibreglass | 3.7 /39.8                               | HEPA H13 EN 1822-1       | 176°F /80°C  |

## DC AirCube

| Part No | Type of filter / Machine  | Construction                    | Material              | Area [m <sup>2</sup> /ft <sup>2</sup> ] | Classification     | Max temp    |
|---------|---------------------------|---------------------------------|-----------------------|---|--------------------|-------------|
| 42690   | Pre-filter, AirCube 500   | Pleated carpet                  | Polyester             | 0.18 /1.9                               | G4                 | 176°F /80°C |
| 42692   | HEPA filter, AirCube 500  | Pleated                         | Cellulose, fibreglass | 4.56 /49                                | HEPA H13 EN 1822-1 | 176°F /80°C |
| 42918   | Pre-filter, AirCube 1200  | Cartridge                       | Polyester             | 0.4 /4.3                                | G4                 | 140°F /60°C |
| 42940   | HEPA filter, AirCube 1200 | Pleated                         | Cellulose, fibreglass | 5 /54                                   | HEPA H13 EN 1822-1 | 194°F /90°C |
| 42917   | Pre-filter, AirCube 2000  | Cartridge                       | Polyester             | 0.5 /5.4                                | G4                 | 140°F /60°C |
| 42896   | HEPA filter, AirCube 2000 | Pleated around support cylinder | Cellulose, fibreglass | 10 /107                                 | HEPA H13 EN 1822-1 | 194°F /90°C |



## Filters for earlier models

### DC 2500i, DC 2500, DC 2500 Twin

| Part No | Description                             | Construction                    | Material              | Area [m <sup>2</sup> /ft <sup>2</sup> ] | Classification           | Max temp     |
|---------|---|---------------------------------|-----------------------|---|--------------------------|--------------|
| 4889    | Fine filter                             | Pleated                         | Polyester             | 1.4 /15                                 | IEC EN 60335-2-69 Part 1 | 266°F /130°C |
| 404901  | Fine filter                             | Pleated around support cylinder | Cellulose             | 1.5 /16.2                               | IEC EN 60335-2-69 Part 1 | 158°F /70°C  |
| 4821    | HEPA filter K                           | Pleated                         | Cellulose, fibreglass | 1.5 /16.2                               | HEPA H13 EN 1822-1       | 158°F /70°C  |
| 4133    | HEPA filter (fitted in the fine filter) | Pleated around support cylinder | Cellulose, fibreglass | 0.5 /5.4                                | HEPA H13 EN 1822-1       | 176°F/80°C   |

### DC 2700c, DC 2700i, DC 2800c, DC 2800c Rental

(Machines from serial number 2527595 can be equipped with HEPA filter (Part No 42027). Older models should be equipped with a HEPA combi-filter.

| Part No | Description   | Construction                    | Material                 | Area [m <sup>2</sup> /ft <sup>2</sup> ] | Classification           | Max temp     |
|---------|---|---------------------------------|--------------------------|---|--------------------------|--------------|
| 4889    | Fine filter   | Pleated                         | Polyester                | 1.4 /15                                 | IEC EN 60335-2-69 Part 1 | 266°F /130°C |
| 404901  | Fine filter   | Pleated around support cylinder | Cellulose                | 1.5 /16.2                               | IEC EN 60335-2-69 Part 1 | 158°F /70°C  |
| 4821    | HEPA filter K   | Pleated                         | Cellulose, fibreglass    | 1.5 /16.2                               | HEPA H13 EN 1822-1       | 158°F /70°C  |
| 4133    | HEPA filter (fitted in the fine filter)                 | Pleated around support cylinder | Cellulose, fibreglass    | 0.5 /5.4                                | HEPA H13 EN 1822-1       | 176°F/80°C   |
| 40479   | Combi-filter (Fine filter + HEPA filter), (GS Asbestos) | Pleated                         | Cellulose, epoxy-treated | 1.5 /16.2                               | HEPA H13 EN 1822-1       | 176°F /80°C  |

### DC 3700c

| Part No | Description | Construction                    | Material                 | Area [m <sup>2</sup> /ft <sup>2</sup> ] | Classification           | Max temp   |
|---------|-------------|---------------------------------|--------------------------|---|--------------------------|------------|
| 42026   | Fine filter | Pleated around support cylinder | Cellulose, epoxy-treated | 1.8 /19.4                               | IEC EN 60335-2-69 Part 1 | 176°F/80°C |
| 42025   | Fine filter | Pleated                         | Polyester                | 1.8 /19.4                               | IEC EN 60335-2-69 Part 1 | 176°F/80°C |

## Accessories and Consumables

# Filters for earlier models

DC 3500, DC 3500TR, DC 3500 Stationary, DC 5500, DC 5500i

| Part No | Description   | Construction                    | Material              | Area [m <sup>2</sup> /ft <sup>2</sup> ] | Classification           | Max temp    |
|---------|---|---------------------------------|-----------------------|---|--------------------------|-------------|
| 408801  | Fine filter   | Pleated                         | Polyester             | 1.6 /17                                 | IEC EN 60335-2-69 Part 1 | 176°F/80°C  |
| 408803  | Fine filter   | Pleated                         | Cellulose             | 1.6 /17                                 | IEC EN 60335-2-69 Part 1 | 176°F/80°C  |
| 4821    | HEPA filter, DC 3500 TR   | Pleated                         | Cellulose, fibreglass | 1.5 /16.2                               | HEPA H13 EN 1822-1       | 158°F /70°C |
| 4366    | HEPA filter, DC 3500 (installed on exhaust)                     | Pleated around support cylinder | Cellulose, fibreglass | 1.2 /12.9                               | HEPA H13 EN 1822-1       | 176°F/80°C  |
| 4422    | HEPA filter, DC 5500 5 kW, 9.2 kW S (installed under top cover) | Pleated around support cylinder | Cellulose, fibreglass | 2.5 /26.9                               | HEPA H13 EN 1822-1       | 176°F/80°C  |
| 4017    | HEPA filter, DC 5500 9.2 kW P (installed on exhaust)            | Pleated around support cylinder | Cellulose, fibreglass | 2.8 /30                                 | HEPA H13 EN 1822-1       | 176°F/80°C  |

DC 3500i, DC 5700c, DC 5800 a/c 5 kW, DC 5800 a/c PTFE

| Part No | Description   | Construction                    | Material              | Area [m <sup>2</sup> /ft <sup>2</sup> ] | Classification     | Max temp   |
|---------|---|---------------------------------|-----------------------|---|--------------------|------------|
| 4917    | Combi-filter DC 3500i (Fine filter + HEPA H13 filter)           | Pleated                         | Cellulose, fibreglass | 1.5 /16.2                               | HEPA H13 EN 1822-1 | 176°F/80°C |
| 4422    | HEPA filter, DC 5700 5 kW, 9.2 kW S (installed under top cover) | Pleated around support cylinder | Cellulose, fibreglass | 2.5 /26.9                               | HEPA H13 EN 1822-1 | 176°F/80°C |
| 4017    | HEPA filter, DC 5700 9.2 kW P (installed on exhaust)            | Pleated around support cylinder | Cellulose, fibreglass | 2.8 /30                                 | HEPA H13 EN 1822-1 | 176°F/80°C |

DC 380, DC 1500, DC AirCube

| Part No | Description                   | Construction            | Material   | Area [m <sup>2</sup> /ft <sup>2</sup> ] | Classification           | Max temp    |
|---------|-------------------------------|-------------------------|------------|---|--------------------------|-------------|
| 4080    | Pre-filter, DC 380/DC AirCube | Carpet                  | Polyester  | 0.1 /1                                  | IEC EN 60335-2-69 Part 1 | 212°F/100°C |
| 4669    | Pre-filter, DC 1500           | Carpet                  | Polyester  | 0.3 /3.2                                | IEC EN 60335-2-69 Part 1 | 212°F/100°C |
| 42136   | HEPA filter, DC AirCube       | Pleated HEPA filter box | Fibreglass | 5.2 /55.9                               | EN 1822-1, HEPA H13      | 176°F/80°C  |

DC 3800a/c, DC 3800c Turbo, DC 3800 Turbo EX, DC 3800c Twin  
DC 3800 TR S, DC 3800i, DC 3800 Stationary, DC 3900, DC 4000 PCB

| Part No | Description           | Construction                    | Material                 | Area [m <sup>2</sup> /ft <sup>2</sup> ] | Classification           | Max temp   |
|---------|-----------------------|---------------------------------|--------------------------|---|--------------------------|------------|
| 42026   | Fine filter           | Pleated around support cylinder | Cellulose, epoxy-treated | 1.8 /19.4                               | IEC EN 60335-2-69 Part 1 | 176°F/80°C |
| 42026ST | Fine filter x 24      | See above                       | Cellulose                | 1.8 /19.4                               | IEC EN 60335-2-69 Part 1 | 176°F/80°C |
| 42025   | Fine filter           | Pleated                         | Polyester                | 1.8 /19.4                               | IEC EN 60335-2-69 Part 1 | 176°F/80°C |
| 42025ST | Fine filter x 24      | Pleated                         | Polyester                | 1.8 /19.4                               | IEC EN 60335-2-69 Part 1 | 176°F/80°C |
| 42465   | Fine filter, PTFE     | Pleated around support cylinder | Polyester, PTFE          | 1.8 /19.4                               | IEC EN 60335-2-69 Part 1 | 176°F/80°C |
| 42024   | HEPA filter           | Pleated                         | Cellulose, fibreglass    | 1.5 /16.2                               | HEPA H13 EN 1822-1       | 176°F/80°C |
| 42398   | Fine filter, grounded | Pleated around support cylinder | Polyester                | 1.8 /19.4                               | IEC EN 60335-2-69 Part 1 | 176°F/80°C |
| 4202501 | Fine filter           | Pleated                         | Antistatic               | 1.5 /16.2                               | IEC EN 60335-2-69 Part 1 | 176°F/80°C |

## Accessories and Consumables

# Packaging

## Dustcontrol Premium Packaging

Dustcontrol is now offering a more robust premium alternative of packaging to protect and secure the transport of larger mobile and semi-mobile units. Premium packaging is designed for fast, quiet and ergonomic mounting/disassembling with the aid of sheet metal clips and tape sealing.

Premium Packaging is an option when ordering and the prices are set according to the table above. Up on return an undamaged packaging to Dustcontrol AB, half of the packaging cost will be credited.



### Part No Description

|       |   |
|-------|---|
| 44637 | Premium Packaging for DC 11-Module XL             |
| 44638 | Premium Packaging for DC 5900 / DC Storm          |
| 44639 | Premium Packaging for DC Storm                    |
| 44640 | Premium Packaging for DC 11-Module / DC Storm LPG |

## Dustcontrols Certified Service

# Meet our Certified Service Team!

We offer a complete service for any of your mobile machines or stationary vacuum systems. If you have a problem with your machine, always contact customer service. In order to get a registration number for your complaint.

Go to [www.dustcontrol.com](http://www.dustcontrol.com) to learn more!

Look out for these Dustdoctors!





Dustcontrol

# INVISIBLE

## THE HAZARDS ARE WHAT YOU CANNOT SEE

Our mission is to highlight the health concerns and consequences of not using the right equipment. We highlight the dangers – those tiny particles that penetrate deep into the lungs, causing lung cancer, asthma and chronic bronchitis, among other things.

To be a leader in this industry you need a core issue. Ours is health – Technology for Healthy Business. We create products that solve the problems associated with unhealthy working environments and that eliminate the hazards the eye cannot see.

Visit [dustcontrol.com](http://dustcontrol.com) to read more about how we can help you with what you cannot see.

# Sustainability at Dustcontrol



Dustcontrol operates within the environmental sector. Our products are made to minimise the release of dust, fluids, and other hazardous particles into the environment. Our slogan, "Technology for Healthy Business", is an approach that characterises our entire operation.

Dustcontrols sustainability initiative is about having an active and credible work both internally and externally; INTERNAL for continued investments in adapting the business in relation to the sustainability perspective. EXTERNALLY for a reduced climate impact in the entire value chain for our products and services. Dustcontrols sustainability strategy is inspired by the UN's 17 global goals and works actively to contribute to them.

The four focus areas of Dustcontrols sustainability strategy are:



RESPONSIBLE SOURCING  
REDUCED ENVIRONMENTAL IMPACT

SUSTAINABLE PRODUCT DEVELOPMENT  
ATTRACTIVE WORKPLACE

## THE GLOBAL GOALS



Dustcontrol is certified in accordance with ISO 9001, 14001 and 45001 with an integrated quality and environmental management system. This includes process management, identifying our environmental footprint, adhering to regulations, and training our employees in the topic. We carefully adhere to the EU's Reach and RoHS directives in order to minimise our use of chemicals. With the help of Lean production, we continuously evaluate our processes and look to improve our overall efficiency.



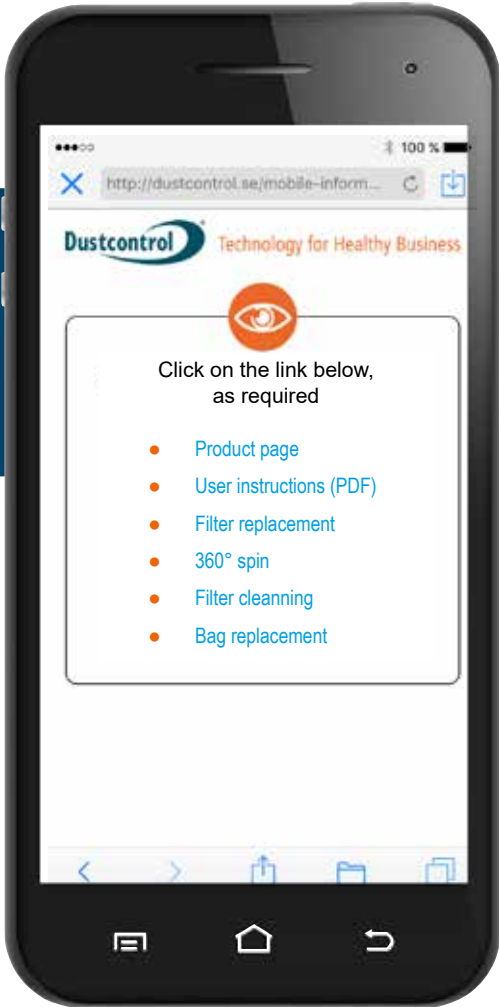




# Dustcontrol QR Codes

Easily scanned using a smartphone, QR codes work like quick links, taking you straight to the information you need. We aim to make it easy for you to find information about our products, such as how to replace and clean the filter, or replace the bag. Our QR codes make it easy to find helpful instructional videos in the language of your choice, including English, Swedish, German or Finnish.

To scan the codes, you will need to download a QR code reader app. These can be obtained free of charge via the App Store, Android Market or similar platforms.



DC Tromb



DC 1800, DC 2800, DC 2900



DC Wet-Vacs



DC AirCubes



DC Storm, DC 5900



DC Accessories FoodIndustry



**How to use our QR codes? See our video on YouTube**

<https://www.youtube.com/watch?v=0BSocYF-6MU>

# Get in Contact!

Contact our sales departments in US or Canada for further info, support, service or a demonstration.



**US** Dustcontrol Inc.  
6720 Amsterdam Way  
US-Wilmington, NC 28405  
Tel: +1 910-395-1808  
sales@dustcontrolusa.com  
www.dustcontrol.us



**Canada** Dustcontrol Canada Inc.  
664 Welham Road  
CA-Barrie, Ontario, L4N 9A1  
Tel: +1 877 844 8784  
info@dustcontrol.ca  
www.dustcontrol.ca



## Save time – use QR codes

There are QR codes on all our mobile machines. Scan the code and you will be able to see videos on filter cleaning and how to replace filters and plastic bags.

No QR reader in your smartphone?  
Download it from the App/Android store

How to use our QR codes?  
See our video on YouTube  
<https://www.youtube.com/watch?v=0BSocYF-6MU>

## Which solution will you choose?

As a true professional, you have high requirements for your equipment. Dustcontrol has been involved with dust extraction and material transport for more than 40 years and we supply dust extractors and air cleaners for all types of applications. No matter what you choose, you can be sure of getting truly professional equipment that is built with your work environment and health in mind.

# Dustcontrol Worldwide



AT

Dustcontrol Ges.m.b.H.  
info@dustcontrol.at  
www.dustcontrol.at



AU

Archquip – All Preparation Equipment  
www.allpreparationequipment.com.au



BA

TENZO d.o.o.  
info@tenzo.ba  
www.tenzo.ba



BENELUX

Dust Solutions BV  
www.dustsolutions.nl



CA

Dustcontrol Canada Inc.  
info@dustcontrol.ca  
www.dustcontrol.ca



CH

Rosset Technik  
Maschinen Werkzeuge AG  
info@rosset-technik.ch  
www.rosset-technik.ch



CL

Ambitec S.A.  
informaciones@ambitec.cl  
www.ambitec.cl



CN

Suzhou Dustcollect Filtration  
Technology Co. Ltd.  
wang@dustcollect.cn  
www.dustcollect.cn



CZ / SK

IML TRADING s. r. o.  
info@dustextraction.sk  
www.dustextraction.sk



DE

Dustcontrol GmbH  
info@dustcontrol.de  
www.dustcontrol.de



DK

CONSTRUCTION:  
Erenfred Pedersen A/S  
info@ep.dk  
www.ep.dk

INDUSTRY:  
Dansk Procesventilation ApS  
info@dansk-procesventilation.dk  
www.dansk-procesventilation.dk



EE

G-Color Baltic OÜ  
sales@g-color.ee  
www.g-color.ee



ES

Barin, s.a.  
info@barin.es  
www.barin.es



GB

Dustcontrol UK Ltd.  
sales@dustcontrol.co.uk  
www.dustcontrol.co.uk



GR

Mavroggiannakis S.A  
ektos@enternet.gr  
www.ektosoftis.com.gr



FI

Dustcontrol FIN OY  
dc@dustcontrol.fi  
www.dustcontrol.fi



FR

CONSTRUCTION:  
SMH Equipements  
info@abequipements.com  
www.smhequipements.com

INDUSTRY:  
Dustcontrol AB  
info@dustcontrol.fra  
www.dustcontrol.fra



HR

Kermek d.o.o.  
kruno.nedeljko@kermek.com  
www.kermek.com



HU

Vandras Kft  
vandras@t-online.hu  
www.vandras.hu



IN

Advance Ventilation Pve Ltd.  
sales@advanceventilation.com  
www.advanceventilation.com



IT

Airum srl  
info@airum.com  
www.airum.com



KR

ESH Engineering Co.  
eshengco@gmail.com  
www.eshengco.com



LT

UAB Hidromega  
info@hidromega.lt  
www.hidromega.lt



LV

SIA Reaktivs  
reaktivs@reaktivs.lv  
www.reaktivs.lv



MY, ID

Städa Enviroospace Bhd  
info@stada.com.my  
www.stada.com.my



NO

Teijo Norge A.S  
firmapost@teijo.no  
www.teijo.no



NZ

Artizan Diamond Tools  
enquiry@artizandiamond.co.nz  
www.artizandiamond.co.nz



PE

Efixo  
contacto@efixo.pe  
www.efixo.pe



PH

Sweden Concrete Machines Inc.  
peringe@packoskick.se  
www.swedenconcretemachines.ph



PL

Bart Sp. z. o.o.  
info@bart-vent.pl  
www.bart-vent.pl



PT

Metec-Mecano Técnica, Lda.  
geral@metec.pt  
www.metec.pt



RO

General Contractor Industry SRL  
office@gci-grup.ro  
www.gci-grup.ro



RS

Enel Alati  
eneldoo@eunet.rs  
www.eneldoo.rs



RU

Centre Vacuum System  
panov.g@movers-td.com  
www.dustcontrolrus.ru



SE

Dustcontrol AB  
info@dustcontrol.se  
www.dustcontrol.com



SG

Städa Enviroospace Pte Ltd  
Info@stada.com.my  
www.stada.com.my



TW

Goodland Enterprise Co., Ltd.  
sales@goodland.com.tw  
www.goodland.com.tw



TH

MCON Intertrade Co., Ltd.  
sales@mconintertrade.com  
www.mconintertrade.com



TR

Ventek Mühendislik Ltd.  
info@ventek.com.tr  
www.ventek.com.tr



AE

Global Enterprises Trading Co L.L.C.  
sales@globalentco.com  
www.globalentco.com

GEM  
Industrial Equipment Trading Co.  
Tel: +971 4 8840 474  
Email: gemuae@eim.ae



UA

MBK Obshemashkontrakt, JSC  
zao@omk.dp.ua  
www.omk.dp.ua



US

Dustcontrol Inc.  
info@dustcontrolusa.com  
www.dustcontrol.us



VN

Tayhostar JSC  
tayhostar@tayhostar.vn  
www.tayhostar.vn

Please contact the head office  
in Sweden if you do not find a  
distributor in your area.

info@dustcontrol.se



Dustcontrol  
TROMB 400

Part no 4313

Healthy Business

**Dustcontrol**®

**US**

Dustcontrol Inc.  
6720 Amsterdam Way  
US-Wilmington, NC 28405  
Tel: +1 910 395 1808  
sales@dustcontrolusa.com  
www.dustcontrol.us

**Canada**

Dustcontrol Canada Inc.  
664 Welham Road  
CA-Barrie, Ontario, L4N 9A1  
Tel: +1 877 844 8784  
info@dustcontrol.ca  
www.dustcontrol.ca

[www.dustcontrol.us](http://www.dustcontrol.us)

[www.dustcontrol.ca](http://www.dustcontrol.ca)